

Recombinant Human CAMK1G Protein, GST-Tagged

Cat. No. CAMK1G-0324H Lot. No. (See product label)

SPECIFICATION

Product Overview	Human CAMK1G full-length ORF (AAH32787, 1 a.a. - 476 a.a.) recombinant protein with GST-tag at N-terminal.
Species	Human
Source	Wheat Germ
Description	This gene encodes a protein similar to calcium/calmodulin dependent protein kinase, however, its exact function is not known. [provided by RefSeq, Jul 2008]
Molecular Mass	78.10 kDa
AA Sequence	MGRKEEDDCSSWKKQTTNIRKTFIFMEVLGSGAFSEVFLVKQRLTGKLFALKCIKKS PAFRDSSLENEIAVLKIKHENIVTLEDIYESTTHYYLVMQLVSGGELFDRILERGVYT EKDASLVIQQVLSAVKYLHENGIVHRDLKPENLLYLTPEENSKIMITDFGLSKMEQNGI MSTACGTPGYVAPEVLAQKPYSKAVDCWSIGVITYILLCGYPPFYEETESKLFEKIKE GYEFESPFWDDISESAKDFICHILLEKDPNERYTCEKALSHPWIDGNTALHRDIYPSV SLQIQKNFAKSKWRQAFNAAAVVHHMRKLHMNLHSPGVRPEVENRPPETQASETS RPSSPEITITEAPVLDHSVALPALTQLPCQHGRRPTAPGGRSLNCLVNGSLHISSSLV PMHQGSLAAGPCGCCSSCLNIGSKGKSSYCSEPTLLKKANKKQNFKSEVMVPVKAS GSSHCRAGQTVCLIM
Applications	Kinase Assay Enzyme-linked Immunoabsorbent Assay Western Blot (Recombinant protein)

 Tel: 1-631-559-9269 1-516-512-3133

 Email: info@creative-biomart.com  Fax: 1-631-938-8127

 45-1 Ramsey Road, Shirley, NY 11967, USA

	Antibody Production Protein Array
Notes	Best use within three months from the date of receipt of this protein.
Storage	Store at -80 centigrade. Aliquot to avoid repeated freezing and thawing.
Storage Buffer	50 mM Tris-HCl, 10 mM reduced Glutathione, pH=8.0 in the elution buffer.
GENE INFORMATION	
Gene Name	CAMK1G calcium/calmodulin-dependent protein kinase IG [Homo sapiens]
Official Symbol	CAMK1G
Synonyms	CAMK1G; calcium/calmodulin-dependent protein kinase IG; calcium/calmodulin-dependent protein kinase type 1G; CLICKIII; dJ272L16.1; VWS1; caMKIG; CLICK III; caMKI gamma; caM-KI gamma; caM kinase IG; caM kinase I gamma; caMK-like CREB kinase III;
Gene ID	57172
mRNA Refseq	NM_020439
Protein Refseq	NP_065172
UniProt ID	Q96NX5

 Tel: 1-631-559-9269 1-516-512-3133

 Email: info@creative-biomart.com  Fax: 1-631-938-8127

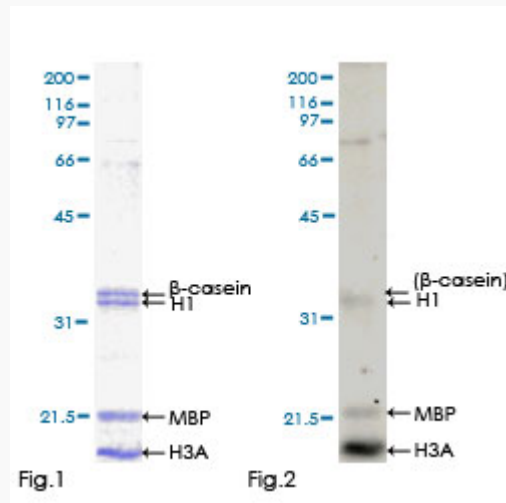
 45-1 Ramsey Road, Shirley, NY 11967, USA

**Quality Control
Testing**



12.5% SDS-PAGE Stained with Coomassie Blue.

Application Image



Kinase Assay

 Tel: 1-631-559-9269 1-516-512-3133

 Email: info@creative-biomart.com  Fax: 1-631-938-8127

 45-1 Ramsey Road, Shirley, NY 11967, USA