

Active Recombinant Full Length Human CAMK2A Protein, GST-tagged

Cat. No. CAMK2A-9765HF **Lot. No.** (See product label)

SPECIFICATION

Product Overview	Full-length human CaMK2 α [1-478(end) amino acids of accession number NP_741960.1] was expressed as N-terminal GST-fusion protein (81 kDa) using baculovirus expression system. GST-CaMK2 α was purified by using glutathione sepharose chromatography.
Species	Human
Source	Sf21 Cells
ProteinLength	1-478(end)
Form	50 mM Tris-HCl, 150 mM NaCl, 0.05% Brij35, 1 mM DTT, 10% glycerol, pH7.5
Bio-activity	The activity was measured by off-chip mobility shift assay(MSA). The enzyme was incubated with fluorescence-labeled substrate, Mg(or Mn)/ATP, and Ca/Calmodulin . The phosphorylated and unphosphorylated substrates were separated and detected by MSA device.
Purity	94%
Applications	SDS-PAGE
Storage	Store at -80C. Avoid repeating freeze-thaws.

 Tel: 1-631-559-9269 1-516-512-3133

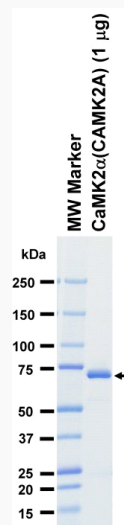
 Email: info@creative-biomart.com  Fax: 1-631-938-8127

 45-1 Ramsey Road, Shirley, NY 11967, USA

GENE INFORMATION

Gene Name	calcium/calmodulin-dependent protein kinase II alpha
Official Symbol	CAMK2A
Synonyms	CAMK2A;CAMKA;CaMKIINalpha;CaMKIIalpha;MRD53;MRT63;KIAA0968
Protein Refseq	NP_741960.1
UniProt ID	Q9UQM7

SDS-PAGE

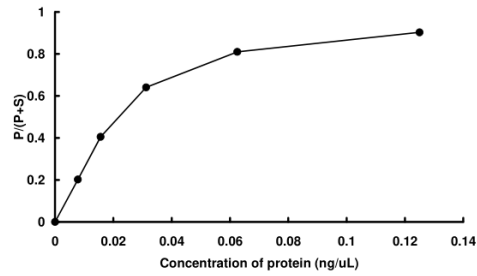


The purity was assessed by SDS-PAGE/CBB staining.

 Tel: 1-631-559-9269 1-516-512-3133

 Email: info@creative-biomart.com  Fax: 1-631-938-8127

 45-1 Ramsey Road, Shirley, NY 11967, USA

Activity data**Activity data**

The activity was measured by off-chip mobility shift assay(MSA). The enzyme was incubated with fluorescence-labeled substrate, Mg(or Mn)/ATP, and Ca/Calmodulin . The phosphorylated and unphosphorylated substrates were separated and detected by MSA device.

 Tel: 1-631-559-9269 1-516-512-3133

 Email: info@creative-biomart.com  Fax: 1-631-938-8127

 45-1 Ramsey Road, Shirley, NY 11967, USA