

Active Recombinant Human CAMK2B Protein, GST-Tagged

Cat. No. CAMK2B-0328H **Lot. No.** (See product label)

SPECIFICATION

Product Overview	Human CAMK2B (NP_742078.1, 1 a.a. - 503 a.a.) full-length recombinant protein with GST tag expressed in baculovirus infected Sf21 cells. cells.
Species	Human
Source	Insect Cells
Description	The product of this gene belongs to the serine/threonine protein kinase family and to the Ca(2+)/calmodulin-dependent protein kinase subfamily. Calcium signaling is crucial for several aspects of plasticity at glutamatergic synapses. In mammalian cells, the enzyme is composed of four different chains: alpha, beta, gamma, and delta. The product of this gene is a beta chain. It is possible that distinct isoforms of this chain have different cellular localizations and interact differently with calmodulin. Alternative splicing results in multiple transcript variants. [provided by RefSeq, May 2014]
Form	Liquid
Bio-activity	The activity was measured by off-chip mobility shift assay. The enzyme was incubated with fluorescence-labeled substrate, Mg(or Mn)/ATP, and Ca/Calmodulin. The phosphorylated and unphosphorylated substrates were separated and detected by LabChip TM3000. Substrate: GS peptide. ATP: 100 μM.
Molecular Mass	83 kDa

 Tel: 1-631-559-9269 1-516-512-3133

 Email: info@creative-biomart.com  Fax: 1-631-938-8127

 45-1 Ramsey Road, Shirley, NY 11967, USA

Purity	74 % by SDS-PAGE/CBB staining
Applications	Functional Study SDS-PAGE
Storage	Store at -80 centigrade. Aliquot to avoid repeated freezing and thawing.
Storage Buffer	In 50 mM Tris-HCl, 150 mM NaCl, pH 7.5 (0.1% CHAPS, 1 mM DTT, 10% glycerol)

GENE INFORMATION

Gene Name	CAMK2B calcium/calmodulin-dependent protein kinase II beta [Homo sapiens]
Official Symbol	CAMK2B
Synonyms	CAMK2B; calcium/calmodulin-dependent protein kinase II beta; calcium/calmodulin dependent protein kinase (CaM kinase) II beta, CAMKB; calcium/calmodulin-dependent protein kinase type II subunit beta; calcium/calmodulin dependent protein kinase type II beta chain; CaM kinase II beta subunit; CaM kinase II beta chain; CAM2; CAMK2; proline rich calmodulin dependent protein kinase; caMK-II subunit beta; CaM-kinase II beta chain; proline rich calmodulin-dependent protein kinase; CAMKB; MGC29528;
Gene ID	816
mRNA Refseq	NM_001220
Protein Refseq	NP_001211
MIM	607707

 Tel: 1-631-559-9269 1-516-512-3133

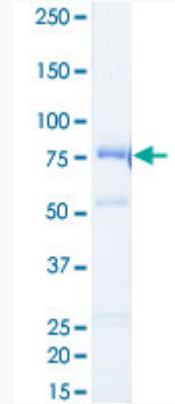
 Email: info@creative-biomart.com  Fax: 1-631-938-8127

 45-1 Ramsey Road, Shirley, NY 11967, USA

UniProt ID

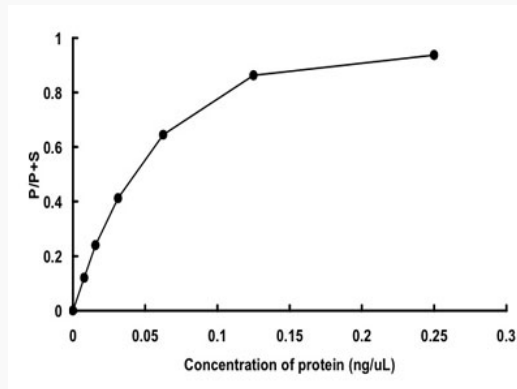
Q13554

Quality Control
Testing



Loading 1 μ g protein in SDS-PAGE

Result of activity
analysis



 Tel: 1-631-559-9269 1-516-512-3133

 Email: info@creative-biomart.com  Fax: 1-631-938-8127

 45-1 Ramsey Road, Shirley, NY 11967, USA