

# Recombinant Human CAMK2B Protein, Myc/DDK-tagged, C13 and N15-labeled

**Cat. No.** CAMK2B-2475H    **Lot. No.** (See product label)

## SPECIFICATION

### Product Overview

CAMK2B MS Standard C13 and N15-labeled recombinant protein (NP\_742078) with a C-terminal MYC/DDK tag, was expressed in HEK293 cells.

### Species

Human

### Source

HEK293

### Description

The product of this gene belongs to the serine/threonine protein kinase family and to the Ca(2+)/calmodulin-dependent protein kinase subfamily. Calcium signaling is crucial for several aspects of plasticity at glutamatergic synapses. In mammalian cells, the enzyme is composed of four different chains: alpha, beta, gamma, and delta. The product of this gene is a beta chain. It is possible that distinct isoforms of this chain have different cellular localizations and interact differently with calmodulin. Alternative splicing results in multiple transcript variants.

### Molecular Mass

56.4 kDa

### AA Sequence

MATTVTCTRFTDEYQLYEDIGKGAFSVVRRCVKLCTGHEYAAKIINTKKLSARDHQKL  
 EREARICRLKHSNIVRLHDSISEEGFHLYVFDLVTGGELFEDIVAREYYSEADASHCI  
 QQILEAVLHCHQMGGVHRDLKPENLLLASKCKGA AVKLADFGLAIEVQGDQQAWFG  
 FAGTPGYLSPEVLRKEAYGKPVDIWACGVILYILLVGYPFWDEDQHKLYQQIKAGA  
 YDFPSPEWDTVTPEAKNLINQMLTINPAKRITAHEALKHPWVCQRSTVASMMHRQE  
 TVECLKKFNARRKLGAILTTMLATRNFSAAKSLLNKKADGVKPKQTNSTKNSAAATS

 Tel: 1-631-559-9269    1-516-512-3133

 Email: [info@creative-biomart.com](mailto:info@creative-biomart.com)     Fax: 1-631-938-8127

 45-1 Ramsey Road, Shirley, NY 11967, USA

PKGTLPPAALESSDSANTTIEDEDAKARKQEIIKTTEQLIEAVNNGDFEAYAKICDPGL  
 TSFEPEALGNLVEGMDFHRFYFENLLAKNSKPIHTTILNPHVHVIGEDAACIAYIRLTQ  
 YIDGQGRPRTSQSEETR VWHRRD GKWQNVHFCSGAPVAPLQTRTRPLEQKLISE  
 EDLAANDILDYKDDDDKV

**Purity** > 80% as determined by SDS-PAGE and Coomassie blue staining

**Stability** Stable for 3 months from receipt of products under proper storage and handling conditions.

**Storage** Store at -80 centigrade. Avoid repeated freeze-thaw cycles.

**Concentration** 50 µg/mL as determined by BCA

**Storage Buffer** 100 mM glycine, 25 mM Tris-HCl, pH 7.3.

## GENE INFORMATION

**Gene Name** CAMK2B calcium/calmodulin-dependent protein kinase II beta [ Homo sapiens (human) ]

**Official Symbol** CAMK2B

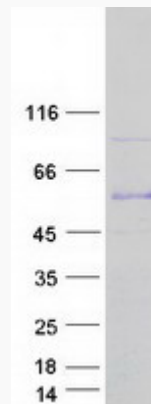
**Synonyms** CAMK2B; calcium/calmodulin-dependent protein kinase II beta; calcium/calmodulin dependent protein kinase (CaM kinase) II beta, CAMKB; calcium/calmodulin-dependent protein kinase type II subunit beta; calcium/calmodulin dependent protein kinase type II beta chain; CaM kinase II beta subunit; CaM kinase II beta chain; CAM2; CAMK2; proline rich calmodulin dependent protein kinase; caMK-II subunit beta; CaM-kinase II beta chain; proline rich calmodulin-dependent protein kinase; CAMKB; MGC29528;

 Tel: 1-631-559-9269 1-516-512-3133

 Email: [info@creative-biomart.com](mailto:info@creative-biomart.com)  Fax: 1-631-938-8127

 45-1 Ramsey Road, Shirley, NY 11967, USA

<b>Gene ID</b>	816
<b>mRNA Refseq</b>	NM_172081
<b>Protein Refseq</b>	NP_742078
<b>MIM</b>	607707
<b>UniProt ID</b>	Q13554

**SDS-PAGE**

 Tel: 1-631-559-9269 1-516-512-3133

 Email: [info@creative-biomart.com](mailto:info@creative-biomart.com)  Fax: 1-631-938-8127

 45-1 Ramsey Road, Shirley, NY 11967, USA