

## Recombinant Human CAMK2B, His-tagged, Active

Cat. No. CAMK2B-265H Lot. No. (See product label)

### SPECIFICATION

<b>Product Overview</b>	Recombinant full-length human CAMK2beta was expressed by baculovirus in Sf9 cells using an N-terminal His tag. MW = 58 kDa.
<b>Species</b>	Human
<b>Source</b>	Sf9 Cells
<b>Description</b>	CAMK2 $\beta$ belongs to the serine/threonine protein kinase family and to the type II multifunctional Ca(2+)/calmodulin-dependent protein kinase subfamily. CAMK2 $\beta$ showed wide tissue and cell distribution, and one of CAMK2 $\beta$ variant predominated in adult brain. The ratio of CAMK2 $\alpha$ and CAMK2 $\beta$ protein levels were inversely related during activity in hippocampal neurons. CAMK2 $\beta$ is a prominent kinase in the central nervous system and may function in long-term potentiation and neurotransmitter release.
<b>Sequence</b>	Full-length.
<b>Applications</b>	Kinase Assay, Western Blot.
<b>Storage And Stability</b>	Store product at -70°C. For optimal storage, aliquot target into smaller quantities after centrifugation and store at recommended temperature. For most favorable performance, avoid repeated handling and multiple freeze/thaw cycles.

### GENE INFORMATION

 Tel: 1-631-559-9269 1-516-512-3133

 Email: [info@creative-biomart.com](mailto:info@creative-biomart.com)  Fax: 1-631-938-8127

 45-1 Ramsey Road, Shirley, NY 11967, USA

<b>Gene Name</b>	CAMK2B calcium/calmodulin-dependent protein kinase II beta [ Homo sapiens ]
<b>Synonyms</b>	CAMK2B; calcium/calmodulin-dependent protein kinase II beta; CAM2; CAMK2; CAMKB; MGC29528; OTTHUMP00000159355; OTTHUMP00000159356; OTTHUMP00000209343; CaM-kinase II beta chain; CaM kinase II beta subunit; proline rich calmodulin-dependent protein kinase; calcium/calmodulin-dependent protein kinase type II beta chain; EC 2.7.11.17; CaM kinase II subunit beta; CaMK-II subunit beta
<b>Gene ID</b>	816
<b>mRNA Refseq</b>	NM_001220
<b>Protein Refseq</b>	NP_001211
<b>MIM</b>	607707
<b>UniProt ID</b>	Q13554
<b>Chromosome Location</b>	22q12; 7p14.3-p14.1
<b>Pathway</b>	Calcium signaling pathway; ErbB signaling pathway; Glioma; GnRH signaling pathway; Long-term potentiation; Melanogenesis; Neurotrophin signaling pathway; Olfactory transduction; Wnt signaling pathway
<b>Function</b>	ATP binding; calmodulin binding; calmodulin-dependent protein kinase activity; nucleotide binding; transferase activity

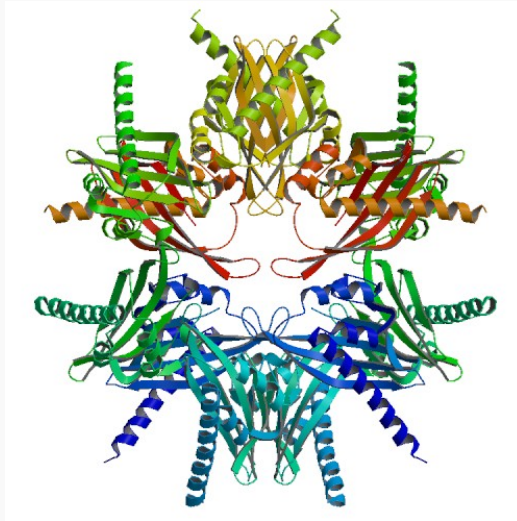
 Tel: 1-631-559-9269 1-516-512-3133

 Email: [info@creative-biomart.com](mailto:info@creative-biomart.com)  Fax: 1-631-938-8127

 45-1 Ramsey Road, Shirley, NY 11967, USA



PDB rendering based  
on 2ux0.



Tel: 1-631-559-9269 1-516-512-3133

Email: [info@creative-biomart.com](mailto:info@creative-biomart.com) Fax: 1-631-938-8127

45-1 Ramsey Road, Shirley, NY 11967, USA