

Active Recombinant Full Length Human CAMK2B Protein, GST-tagged

Cat. No. CAMK2B-9254HF **Lot. No.** (See product label)

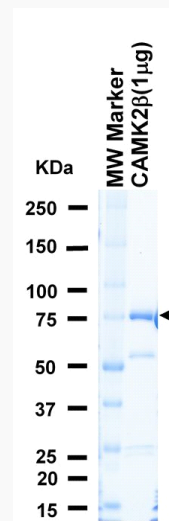
SPECIFICATION

Product Overview	Full-length human CaMK2 β [1-503 amino acids of accession number NP_742078.1] was expressed as N- terminal GST-fusion protein (83 kDa) using baculovirus expression system. GST-CaMK2 β was purified by using glutathione sepharose chromatography.
Species	Human
Source	Sf21 Cells
ProteinLength	1-503
Form	50 mM Tris-HCl, 150 mM NaCl, 0.05% Brij35, 1 mM DTT, 10% glycerol, pH7.5
Bio-activity	The activity was measured by off-chip mobility shift assay(MSA). The enzyme was incubated with fluorescence-labeled substrate, Mg(or Mn)/ATP, and Ca/Calmodulin . The phosphorylated and unphosphorylated substrates were separated and detected by MSA device.
Purity	74%
Applications	SDS-PAGE
Storage	Store at -80C. Avoid repeating freeze-thaws.

 Tel: 1-631-559-9269 1-516-512-3133

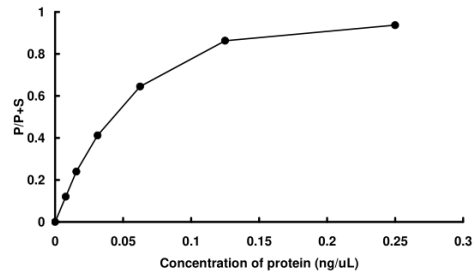
 Email: info@creative-biomart.com  Fax: 1-631-938-8127

 45-1 Ramsey Road, Shirley, NY 11967, USA

GENE INFORMATION**Gene Name** calcium/calmodulin-dependent protein kinase II beta**Official Symbol** CAMK2B**Synonyms** CAMK2B;CAM2;CAMK2;CAMKB;CaMKIIbeta;MRD54**Protein Refseq** [NP_742078.1\(iso5\)](#)**UniProt ID** [Q13554](#)**SDS-PAGE**

The purity was assessed by SDS-PAGE/CBB staining.

 Tel: 1-631-559-9269 1-516-512-3133 Email: info@creative-biomart.com  Fax: 1-631-938-8127 45-1 Ramsey Road, Shirley, NY 11967, USA

Activity data**Activity data**

The activity was measured by off-chip mobility shift assay(MSA). The enzyme was incubated with fluorescence-labeled substrate, Mg(or Mn)/ATP, and Ca/Calmodulin . The phosphorylated and unphosphorylated substrates were separated and detected by MSA device.

 Tel: 1-631-559-9269 1-516-512-3133

 Email: info@creative-biomart.com  Fax: 1-631-938-8127

 45-1 Ramsey Road, Shirley, NY 11967, USA