

Active Recombinant Human CAMK2G Protein, GST-Tagged

Cat. No. CAMK2G-0334H Lot. No. (See product label)

SPECIFICATION

Product Overview	Human CAMK2G (NP_751910.1, 1 a.a. - 518 a.a.) full-length recombinant protein with GST tag expressed in baculovirus infected Sf21 cells. cells.
Species	Human
Source	Insect Cells
Description	<p>The product of this gene is one of the four subunits of an enzyme which belongs to the serine/threonine protein kinase family, and to the Ca(2+)/calmodulin-dependent protein kinase subfamily. Calcium signaling is crucial for several aspects of plasticity at glutamatergic synapses. In mammalian cells the enzyme is composed of four different chains: alpha, beta, gamma, and delta. The product of this gene is a gamma chain. Many alternatively spliced transcripts encoding different isoforms have been described but the full-length nature of all the variants has not been determined.[provided by RefSeq, Mar 2011]</p>
Form	Liquid
Bio-activity	<p>The activity was measured by off-chip mobility shift assay. The enzyme was incubated with fluorescence-labeled substrate, Mg(or Mn)/ATP, and Ca/Calmodulin. The phosphorylated and unphosphorylated substrates were separated and detected by LabChip TM3000. Substrate: GS peptide. ATP: 100 µM.</p>
Molecular Mass	85 kDa

 Tel: 1-631-559-9269 1-516-512-3133

 Email: info@creative-biomart.com  Fax: 1-631-938-8127

 45-1 Ramsey Road, Shirley, NY 11967, USA

Purity	63 % by SDS-PAGE/CBB staining
Applications	Functional Study SDS-PAGE
Storage	Store at -80 centigrade. Aliquot to avoid repeated freezing and thawing.
Storage Buffer	In 50 mM Tris-HCl, 150 mM NaCl, pH 7.5 (0.1% CHAPS, 1 mM DTT, 10% glycerol)

GENE INFORMATION

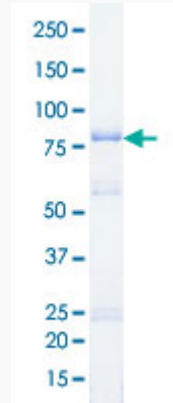
Gene Name	CAMK2G calcium/calmodulin-dependent protein kinase II gamma [Homo sapiens]
Official Symbol	CAMK2G
Synonyms	CAMK2G; calcium/calmodulin-dependent protein kinase II gamma; calcium/calmodulin dependent protein kinase (CaM kinase) II gamma, CAMKG; calcium/calmodulin-dependent protein kinase type II subunit gamma; caMK-II subunit gamma; calcium/calmodulin-dependent protein kinase (CaM kinase) II gamma; CAMK; CAMKG; CAMK-II; FLJ16043; MGC26678;
Gene ID	818
mRNA Refseq	NM_001204492
Protein Refseq	NP_001191421
MIM	602123
UniProt ID	Q13555

 Tel: 1-631-559-9269 1-516-512-3133

 Email: info@creative-biomart.com  Fax: 1-631-938-8127

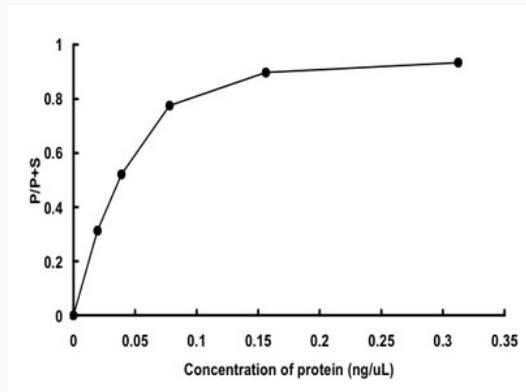
 45-1 Ramsey Road, Shirley, NY 11967, USA

**Quality Control
Testing**



Loading 1 μ g protein in SDS-PAGE

**Result of activity
analysis**



 Tel: 1-631-559-9269 1-516-512-3133

 Email: info@creative-biomart.com  Fax: 1-631-938-8127

 45-1 Ramsey Road, Shirley, NY 11967, USA