

# Recombinant Human CAMK2G Protein, Myc/DDK-tagged, C13 and N15-labeled

Cat. No. CAMK2G-2508H Lot. No. (See product label)

## SPECIFICATION

<b>Product Overview</b>	CAMK2G MS Standard C13 and N15-labeled recombinant protein (NP_751913) with a C-terminal MYC/DDK tag, was expressed in HEK293 cells.
<b>Species</b>	Human
<b>Source</b>	HEK293
<b>Description</b>	The product of this gene is one of the four subunits of an enzyme which belongs to the serine/threonine protein kinase family, and to the Ca(2+)/calmodulin-dependent protein kinase subfamily. Calcium signaling is crucial for several aspects of plasticity at glutamatergic synapses. In mammalian cells the enzyme is composed of four different chains: alpha, beta, gamma, and delta. The product of this gene is a gamma chain. Many alternatively spliced transcripts encoding different isoforms have been described but the full-length nature of all the variants has not been determined.
<b>Molecular Mass</b>	56.8 kDa
<b>AA Sequence</b>	MATTATCTRFTDDYQLFEELGKGAFSVVRRVCVKTSTQEYAAKIINTKKLSARDHQK LEREARICRLKHPNIVRLHDSISEEGFHLYVFDLVTGGELFEDIVAREYYSEADASHC IHQILESVNHIHQHDIVHRDLKPENLLLASKCKGAAVKLAFLAIEVQGEQQAWFGF AGTPGYLSPEVLRKDPYGKPVDIWACGVILYILLVGYPPFWDEDQHKLYQQIKAGAY DFPSPEWDTVTPEAKNLINQMLTINPAKRITADQALKHPWVCQRSTVASMMHRQET VECLRKFNARRKLGAILTTMLVSRNFSAKSLLNKSDGGVQPKSQSNKNSLEPQTT

 Tel: 1-631-559-9269 1-516-512-3133

 Email: [info@creative-biomart.com](mailto:info@creative-biomart.com)  Fax: 1-631-938-8127

 45-1 Ramsey Road, Shirley, NY 11967, USA



VVHNATDGIKGSTESCNTTTEDEDLKVRKQEIIKITEQLIEAINNGDFEAYTKICDPGLT  
SFEPEALGNLVEGMDFHKFYFENLLSKNSKPIHTTILNPHVHVIGEDAACIAYIRLTQYI  
DGQGRPRTSQSEETRVWHRRDGKWLNVHYHCSGAPAAPLQTRTRPLEQKLISEED  
LAANDILDYKDDDDKV

**Purity** > 80% as determined by SDS-PAGE and Coomassie blue staining

**Stability** Stable for 3 months from receipt of products under proper storage and handling conditions.

**Storage** Store at -80 centigrade. Avoid repeated freeze-thaw cycles.

**Concentration** 50 µg/mL as determined by BCA

**Storage Buffer** 100 mM glycine, 25 mM Tris-HCl, pH 7.3.

## GENE INFORMATION

**Gene Name** CAMK2G calcium/calmodulin-dependent protein kinase II gamma [ Homo sapiens (human) ]

**Official Symbol** CAMK2G

**Synonyms** CAMK2G; calcium/calmodulin-dependent protein kinase II gamma; calcium/calmodulin dependent protein kinase (CaM kinase) II gamma, CAMKG; calcium/calmodulin-dependent protein kinase type II subunit gamma; caMK-II subunit gamma; calcium/calmodulin-dependent protein kinase (CaM kinase) II gamma; CAMK; CAMKG; CAMK-II; FLJ16043; MGC26678;

**Gene ID** 818

Tel: 1-631-559-9269 1-516-512-3133

Email: [info@creative-biomart.com](mailto:info@creative-biomart.com) Fax: 1-631-938-8127

45-1 Ramsey Road, Shirley, NY 11967, USA

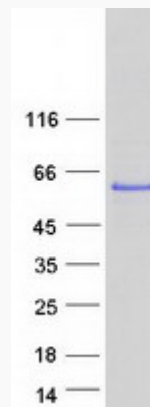
mRNA Refseq [NM\\_172173](#)

Protein Refseq [NP\\_751913](#)

MIM [602123](#)

UniProt ID [Q13555](#)

SDS-PAGE



 Tel: 1-631-559-9269 1-516-512-3133

 Email: [info@creative-biomart.com](mailto:info@creative-biomart.com)  Fax: 1-631-938-8127

 45-1 Ramsey Road, Shirley, NY 11967, USA