

Recombinant Human CAMK2G Protein, GST-tagged

Cat. No. CAMK2G-267H Lot. No. (See product label)

SPECIFICATION

Product Overview	Full-length recombinant human CAMK2gamma was expressed by baculovirus in Sf9 cells using an N-terminal GST tag.
Species	Human
Source	Insect Cells
Description	The product of this gene is one of the four subunits of an enzyme which belongs to the serine/threonine protein kinase family, and to the Ca(2+)/calmodulin-dependent protein kinase subfamily. Calcium signaling is crucial for several aspects of plasticity at glutamatergic synapses. In mammalian cells the enzyme is composed of four different chains: alpha, beta, gamma, and delta. The product of this gene is a gamma chain. Many alternatively spliced transcripts encoding different isoforms have been described but the full-length nature of all the variants has not been determined.
Molecular Mass	~86 kDa
Purity	> 75%
Stability	One year at -70 centigrade from date of shipment.
Storage	Store product at -70 centigrade. For optimal storage, aliquot target into smaller quantities after centrifugation and store at recommended temperature. For most favorable performance, avoid repeated handling and multiple freeze/thaw cycles.

 Tel: 1-631-559-9269 1-516-512-3133

 Email: info@creative-biomart.com  Fax: 1-631-938-8127

 45-1 Ramsey Road, Shirley, NY 11967, USA

Concentration	0.05 µg/µL
Storage Buffer	50 mM Tris-HCl, pH 7.5, 150 mM NaCl, 10 mM glutathione, 0.1 mM EDTA, 0.25 mM DTT, 0.1 mM PMSF, 25% glycerol.
Shipping	Dry ice.

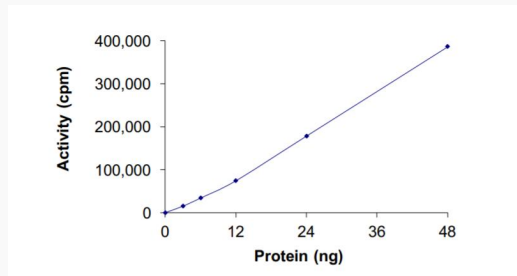
GENE INFORMATION

Gene Name	CAMK2G calcium/calmodulin dependent protein kinase II gamma [Homo sapiens (human)]
Official Symbol	CAMK2G
Synonyms	CAMK2G; calcium/calmodulin dependent protein kinase II gamma; CAMK; CAMKG; MRD59; CAMK-II; calcium/calmodulin-dependent protein kinase type II subunit gamma; caMK-II subunit gamma; calcium/calmodulin-dependent protein kinase (CaM kinase) II gamma; EC 2.7.11.17
Gene ID	818
mRNA Refseq	NM_172169
Protein Refseq	NP_751909
MIM	602123
UniProt ID	Q13555

 Tel: 1-631-559-9269 1-516-512-3133

 Email: info@creative-biomart.com  Fax: 1-631-938-8127

 45-1 Ramsey Road, Shirley, NY 11967, USA

Activity

The specific activity of CAMK2G was determined to be 260 nmol/min/mg as per activity assay protocol.

Purity