

# Recombinant Full Length Human CAMK2G Protein, His tagged

Cat. No. CAMK2G-6970HF Lot. No. (See product label)

## SPECIFICATION

<b>Product Overview</b>	Recombinant Full Length Human CAMK2G Protein with His tag was expressed in Baculovirus-Insect Cells.
<b>Species</b>	Human
<b>Source</b>	Insect Cells
<b>ProteinLength</b>	1-518 aa
<b>Description</b>	The product of this gene is one of the four subunits of an enzyme which belongs to the serine/threonine protein kinase family, and to the Ca(2+)/calmodulin-dependent protein kinase subfamily. Calcium signaling is crucial for several aspects of plasticity at glutamatergic synapses. In mammalian cells the enzyme is composed of four different chains: alpha, beta, gamma, and delta. The product of this gene is a gamma chain. Many alternatively spliced transcripts encoding different isoforms have been described but the full-length nature of all the variants has not been determined.
<b>AASequence</b>	MHHHHHHHHHDYKDDDDKMATTATCTRFTDDYQLFEELGKGAFSVVRRRCVKKTSTQ EYAAKIINTKKLSARDHQKLEREARICRLKHPNIVRLHDSISEEGFHVLVFDLVTGGE LFEDIVAREYYSEADASHCIHQILES VNHIHQHDIVHRDLKPENLLLASKCKGAAVKLA DFGLAIEVQGEQQAWFGFAGTPGYLSPEVLRKDPYGKPVDIWACGVILYILLVGYPP FWDEDQHKLYQQIKAGAYDFPSPEWDTVTPEAKNLINQMLTINPAKRITADQALKHP WVCQRSTVASMMHRQETVECLRKFNARRKLGKAILTMLVSRNFSAKSLLNKKS GGVKKRKSSSSVHLM PQSNNKNSLVSPAQEPAPLQTAMEPQTTVVHNATDGIKGST

 Tel: 1-631-559-9269 1-516-512-3133

 Email: [info@creative-biomart.com](mailto:info@creative-biomart.com)  Fax: 1-631-938-8127

 45-1 Ramsey Road, Shirley, NY 11967, USA

ESCNTTTEDEDLKGRVPEGRSSRDRTAPSAGMQPQPQLCSSLSSAMRKQEIIKITEQLIE  
 AINNGDFEAYTKICDPGLTSFEPEALGNLVEGMDFHKFYFENLLSKNSKPIHTTILNPH  
 VHVIGEDAACIAYIRLTQYI

**Molecular Mass** 60 kDa

**Purity** >90% by SDS-PAGE

**Storage** Store it under sterile conditions at -20 to -80 centigrade. It is recommended that the protein be aliquoted for optimal storage. Avoid repeated freeze-thaw cycles.

**Storage Buffer** Sterile 20mM Tris, pH7.5, 200mM NaCl, 10% Glycerol. 1mM DTT.

**Concentration** 0.34 mg/mL by Bradford

## GENE INFORMATION

**Gene Name** CAMK2G calcium/calmodulin dependent protein kinase II gamma [ Homo sapiens (human) ]

**Official Symbol** CAMK2G

**Synonyms** CAMK2G; calcium/calmodulin-dependent protein kinase II gamma; calcium/calmodulin dependent protein kinase (CaM kinase) II gamma , CAMKG; calcium/calmodulin-dependent protein kinase type II subunit gamma; caMK-II subunit gamma; calcium/calmodulin-dependent protein kinase (CaM kinase) II gamma; CAMK; CAMKG; CAMK-II; FLJ16043; MGC26678;

**Gene ID** 818

**mRNA Refseq** NM\_001204492

 Tel: 1-631-559-9269 1-516-512-3133

 Email: [info@creative-biomart.com](mailto:info@creative-biomart.com)  Fax: 1-631-938-8127

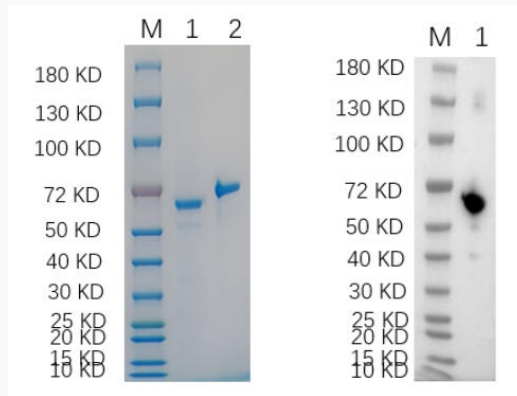
 45-1 Ramsey Road, Shirley, NY 11967, USA

**Protein Refseq** NP\_001191421

**MIM** 602123

**UniProt ID** Q13555

**SDS-PAGE and WB**



Reducing 4%-20% SDS-PAGE (CBB stained) and WB (Anti-His Mouse Monoclonal Antibody) analysis profiles of purified CAMK2G. 1. CAMK2G: 1  $\mu$ g 2. BSA: 1  $\mu$ g

 Tel: 1-631-559-9269 1-516-512-3133

 Email: [info@creative-biomart.com](mailto:info@creative-biomart.com)  Fax: 1-631-938-8127

 45-1 Ramsey Road, Shirley, NY 11967, USA