

Active Recombinant Full Length Human CAMK2G Protein, GST-tagged

Cat. No. CAMK2G-6999HF **Lot. No.** (See product label)

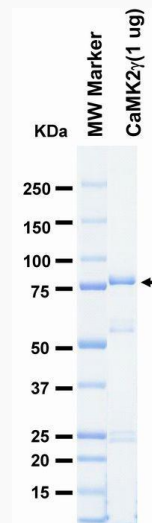
SPECIFICATION

Product Overview	Full-length human CaMK2γ[1-518(end) amino acids of accession number NP_751910.1] was expressed as N-terminal GST-fusion protein (85 kDa) using baculovirus expression system. GST-CaMK2γ was purified by using glutathione sepharose chromatography.
Species	Human
Source	Sf21 Cells
ProteinLength	1-518(end)
Form	50 mM Tris-HCl, 150 mM NaCl, 0.05% Brij35, 1 mM DTT, 10% glycerol, pH7.5
Bio-activity	The activity was measured by off-chip mobility shift assay. The enzyme was incubated with fluorescence-labeled substrate, Mg(or Mn)/ATP, and Ca/Calmodulin . The phosphorylated and unphosphorylated substrates were separated and detected by LabChip™3000.
Purity	63%
Applications	SDS-PAGE
Storage	Store at -80C. Avoid repeating freeze-thaws.

 Tel: 1-631-559-9269 1-516-512-3133

 Email: info@creative-biomart.com  Fax: 1-631-938-8127

 45-1 Ramsey Road, Shirley, NY 11967, USA

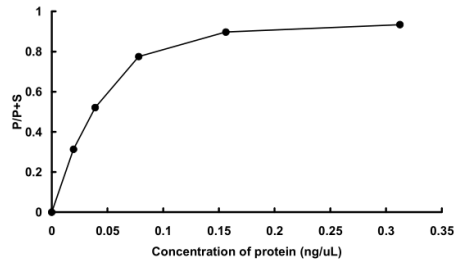
GENE INFORMATION**Gene Name** calcium/calmodulin-dependent protein kinase II gamma**Official Symbol** CAMK2G**Synonyms** CAMK2G;CAMK;CAMK-II;CAMKG;MRD59**Protein Refseq** [NP_751910.1](#)**UniProt ID** [Q13555](#)**SDS-PAGE**

The purity was assessed by SDS-PAGE/CBB staining.

 Tel: 1-631-559-9269 1-516-512-3133

 Email: info@creative-biomart.com  Fax: 1-631-938-8127

 45-1 Ramsey Road, Shirley, NY 11967, USA

Activity data**Activity data**

The activity was measured by off-chip mobility shift assay. The enzyme was incubated with fluorescence-labeled substrate, Mg(or Mn)/ATP, and Ca/Calmodulin . The phosphorylated and unphosphorylated substrates were separated and detected by LabChip™3000.

 Tel: 1-631-559-9269 1-516-512-3133

 Email: info@creative-biomart.com  Fax: 1-631-938-8127

 45-1 Ramsey Road, Shirley, NY 11967, USA