

Recombinant Human CAMK4 Protein, GST-Tagged

Cat. No. CAMK4-0336H Lot. No. (See product label)

SPECIFICATION

Product Overview Human CAMK4 full-length ORF (AAH25687.1, 1 a.a. - 473 a.a.) recombinant protein with GST-tag at N-terminal.

Species Human

Source Wheat Germ

Description The product of this gene belongs to the serine/threonine protein kinase family, and to the Ca(2+)/calmodulin-dependent protein kinase subfamily. This enzyme is a multifunctional serine/threonine protein kinase with limited tissue distribution, that has been implicated in transcriptional regulation in lymphocytes, neurons and male germ cells. [provided by RefSeq, Jul 2008]

Molecular Mass 77.66 kDa

AA Sequence

```

MLKVTVPSCSASSCSSVTASAAPGTASLVPDYWIDGNSNRDALSDFFEVESELGRGA
TSIVYRCKQKGTQKPYALKVLKKTVDKKIVRTEIGVLLRLSHPNIIKLKEIFETPTEISLV
LELVTTGGELFDRIVEKGYYSERDAADAVKQILEAVAYLHENGIVHRDLKPENLLYATP
APDAPLKIADFGLSKIVEHQVLMKTVCGTPGYCAPEILRGCAYGPEVDMWVSVGIITYI
LLCGFEPFYDERGDQFMFRRILNCEYYFISPWVDEVSLNAKDLVRKLIVLDPKKRLT
TFQALQHPWVTGKAANFVHMDTAQKKLQEFNARRKLKAAVKAVVASSRLGSASSS
HGSIQESHKASRDPSPIQDGNEDMKAIPERGEKIQQDGAQAQAAVKGAQAELMKVQALE
KVKGADINAEAEAPKMVPKAVEDGIKVADLELEEGLAEELKKTVEEAAAPREGQGSSA
VGFEVPQQDVILPEY
    
```

 Tel: 1-631-559-9269 1-516-512-3133

 Email: info@creative-biomart.com  Fax: 1-631-938-8127

 45-1 Ramsey Road, Shirley, NY 11967, USA

Applications	<p>Kinase Assay</p> <p>Enzyme-linked Immunoabsorbent Assay</p> <p>Western Blot (Recombinant protein)</p> <p>Antibody Production</p> <p>Protein Array</p>
Notes	Best use within three months from the date of receipt of this protein.
Storage	Store at -80 centigrade. Aliquot to avoid repeated freezing and thawing.
Storage Buffer	50 mM Tris-HCl, 10 mM reduced Glutathione, pH=8.0 in the elution buffer.
GENE INFORMATION	
Gene Name	CAMK4 calcium/calmodulin-dependent protein kinase IV [Homo sapiens]
Official Symbol	CAMK4
Synonyms	<p>CAMK4; calcium/calmodulin-dependent protein kinase IV; calcium/calmodulin-dependent protein kinase type IV; brain Ca⁺⁺ calmodulin dependent protein kinase type IV; calcium/calmodulin dependent protein kinase type IV catalytic chain; CAM kinase IV; CAM kinase GR; CaMK GR; caM kinase-GR; CAM kinase- GR; brain Ca⁺⁺-calmodulin-dependent protein kinase type IV; brain Ca(2+)-calmodulin-dependent protein kinase type IV; calcium/calmodulin-dependent protein kinase type IV catalytic chain; IV; caMK; CaMK IV; CaMK-GR; MGC36771;</p>
Gene ID	814
mRNA Refseq	NM_001744
Protein Refseq	NP_001735

 Tel: 1-631-559-9269 1-516-512-3133

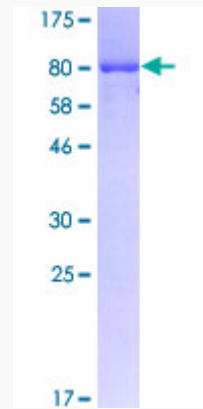
 Email: info@creative-biomart.com  Fax: 1-631-938-8127

 45-1 Ramsey Road, Shirley, NY 11967, USA

MIM 114080

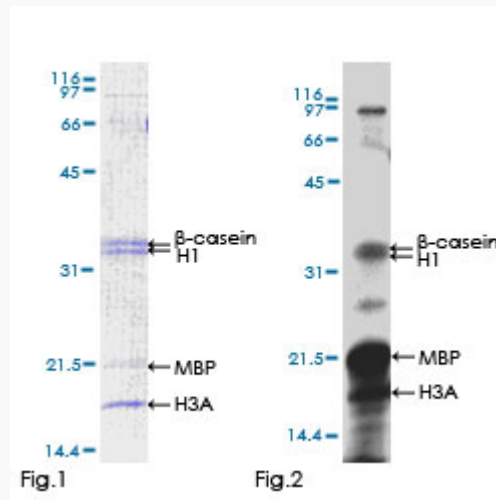
UniProt ID Q16566

Quality Control Testing



12.5% SDS-PAGE Stained with Coomassie Blue.

Application Image



Kinase Assay

Tel: 1-631-559-9269 1-516-512-3133

Email: info@creative-biomart.com Fax: 1-631-938-8127

45-1 Ramsey Road, Shirley, NY 11967, USA