

Active Recombinant Human CAMKK1 Protein, GST-Tagged

Cat. No. CAMKK1-0338H **Lot. No.** (See product label)

SPECIFICATION

Product Overview	Human CAMKK1 (NP_115670.1, 1 a.a. - 505 a.a.) full-length recombinant protein with GST tag expressed in baculovirus infected Sf21 cells. cells.
Species	Human
Source	Insect Cells
Description	The product of this gene belongs to the Serine/Threonine protein kinase family, and to the Ca(2+)/calmodulin-dependent protein kinase subfamily. This protein plays a role in the calcium/calmodulin-dependent (CaM) kinase cascade. Three transcript variants encoding two distinct isoforms have been identified for this gene. [provided by RefSeq, Jul 2008]
Form	Liquid
Bio-activity	The activity was measured by off-chip mobility shift assay. The enzyme was incubated with fluorescence-labeled substrate, Mg(or Mn)/ATP, and Ca/Calmodulin. The phosphorylated and unphosphorylated substrates were separated and detected by LabChip 3000. Substrate: CAMKK substrate. ATP: 500 μM
Molecular Mass	82 kDa
Purity	72 % by SDS-PAGE/CBB staining
Applications	Functional Study

 Tel: 1-631-559-9269 1-516-512-3133

 Email: info@creative-biomart.com  Fax: 1-631-938-8127

 45-1 Ramsey Road, Shirley, NY 11967, USA

SDS-PAGE

Storage Store at -80 centigrade. Aliquot to avoid repeated freezing and thawing.

Storage Buffer In 50 mM Tris-HCl, 150 mM NaCl, pH 7.5 (0.1% CHAPS, 1 mM DTT, 10% glycerol)

GENE INFORMATION

Gene Name [CAMKK1 calcium/calmodulin-dependent protein kinase kinase 1, alpha \[Homo sapiens \]](#)

Official Symbol [CAMKK1](#)

Synonyms CAMKK1; calcium/calmodulin-dependent protein kinase kinase 1, alpha; calcium/calmodulin-dependent protein kinase kinase 1; CAMKKA; DKFZp761M0423; MGC34095; caMKK 1; caM-KK 1; caM-KK alpha; CAMKK alpha protein; caM-kinase kinase 1; caM-kinase IV kinase; caM-kinase kinase alpha; calcium/calmodulin-dependent protein kinase kinase alpha;

Gene ID [84254](#)

mRNA Refseq [NM_032294](#)

Protein Refseq [NP_115670](#)

MIM [611411](#)

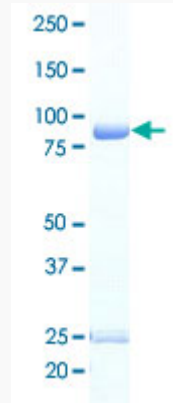
UniProt ID [Q8N5S9](#)

 Tel: 1-631-559-9269 1-516-512-3133

 Email: info@creative-biomart.com  Fax: 1-631-938-8127

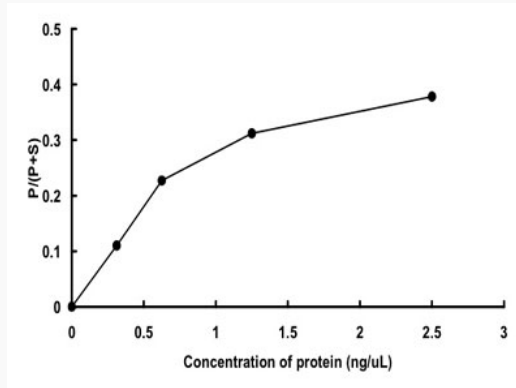
 45-1 Ramsey Road, Shirley, NY 11967, USA

**Quality Control
Testing**



Loading 1 μ g protein in SDS-PAGE

**Result of activity
analysis**



 Tel: 1-631-559-9269 1-516-512-3133

 Email: info@creative-biomart.com  Fax: 1-631-938-8127

 45-1 Ramsey Road, Shirley, NY 11967, USA