

# Active Recombinant Full Length Human CAMKK1 Protein, GST-tagged

**Cat. No.** CAMKK1-2769HF    **Lot. No.** (See product label)

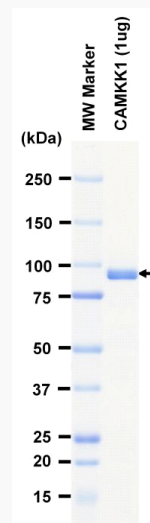
## SPECIFICATION

<b>Product Overview</b>	Full-length human CAMKK1[1-505(end) amino acids of accession number NP_115670.1] was expressed as N-terminal GST-fusion protein (83 kDa) using baculovirus expression system. GST-CAMKK1 was purified by using glutathione sepharose chromatography.
<b>Species</b>	Human
<b>Source</b>	Sf21 Cells
<b>ProteinLength</b>	1-505(end)
<b>Form</b>	50 mM Tris-HCl, 150 mM NaCl, 0.05% Brij35, 1 mM DTT, 10% glycerol, pH7.5
<b>Bio-activity</b>	The activity was measured by off-chip mobility shift assay(MSA). The enzyme was incubated with fluorescence-labeled substrate, Mg(or Mn)/ATP, and Ca/Calmodulin . The phosphorylated and unphosphorylated substrates were separated and detected by MSA device.
<b>Purity</b>	99%
<b>Applications</b>	SDS-PAGE
<b>Storage</b>	Store at -80C. Avoid repeating freeze-thaws.

 Tel: 1-631-559-9269    1-516-512-3133

 Email: [info@creative-biomart.com](mailto:info@creative-biomart.com)     Fax: 1-631-938-8127

 45-1 Ramsey Road, Shirley, NY 11967, USA

**GENE INFORMATION****Gene Name** calcium/calmodulin-dependent protein kinase kinase 1, alpha**Official Symbol** CAMKK1**Synonyms** CAMKK1;CAMKKA;DKFZp761M0423;MGC34095**Protein Refseq** [NP\\_115670.1](#)**UniProt ID** [Q8N5S9](#)**SDS-PAGE**

The purity was assessed by SDS-PAGE/CBB staining.

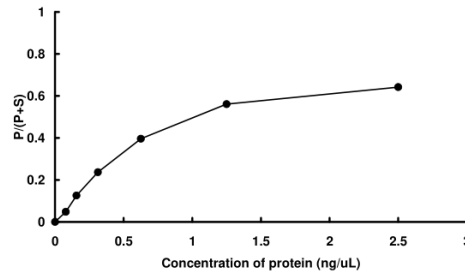
 Tel: 1-631-559-9269 1-516-512-3133

 Email: [info@creative-biomart.com](mailto:info@creative-biomart.com)  Fax: 1-631-938-8127

 45-1 Ramsey Road, Shirley, NY 11967, USA

Activity data

Activity data



The activity was measured by off-chip mobility shift assay(MSA). The enzyme was incubated with fluorescence-labeled substrate, Mg(or Mn)/ATP, and Ca/Calmodulin . The phosphorylated and unphosphorylated substrates were separated and detected by MSA device.

Tel: 1-631-559-9269 1-516-512-3133

Email: [info@creative-biomart.com](mailto:info@creative-biomart.com) Fax: 1-631-938-8127

45-1 Ramsey Road, Shirley, NY 11967, USA