

Recombinant Human CAMKK1 Protein, MYC/DDK-tagged, C13 and N15-labeled

Cat. No. CAMKK1-415H Lot. No. (See product label)

SPECIFICATION

Product Overview

CAMKK1 MS Standard C13 and N15-labeled recombinant protein (NP_115670) with a C-terminal MYC/DDK tag, was expressed in HEK293 cells.

Species

Human

Source

HEK293

Description

The product of this gene belongs to the Serine/Threonine protein kinase family, and to the Ca(2+)/calmodulin-dependent protein kinase subfamily. This protein plays a role in the calcium/calmodulin-dependent (CaM) kinase cascade. Three transcript variants encoding two distinct isoforms have been identified for this gene. [provided by RefSeq, Jul 2008]

Molecular Mass

55.7 kDa

AA Sequence

MEGGPAVCCQDPRAELVERVAIDVTHLEEADGGPEPTRNGVDPPPRARAASVIPG
 STSRLLPARPSLSARKLSLQERPAGSYLEAQAGPYATGPASHISPRAWRRPTIESHH
 VAISDAEDCVQLNQYKQLQSEIGKGAYGVVRLAYNESEDRHYAMKVLKSKKLLKQYG
 FPRRPPPRGSQAAQGGPAKQLLPLERVYQEIAILKKLDHVN VVKLIEVLDDPAEDNLY
 LVFDLLRKGPMVPCDKPFSEEQARLYLRDVLGLEYLHCQKIVHRDIKPSNLLLGD
 DGHVKIADFGVSNQFEGNDAQLSSTAGTPAFMAPEAISDSGQSFSGKALDVWATGV
 TLYCFVYGKCPFIDDFILALHRKIKNEPVVFPEEPEISEELKDLILKMLDKNPETRIGVP
 DIKLHPWVTKNGEEPLPSEEEHCSVVEVTEEEVKNSVRLIPSWTTVILVKSMLRKRSF

 Tel: 1-631-559-9269 1-516-512-3133

 Email: info@creative-biomart.com  Fax: 1-631-938-8127

 45-1 Ramsey Road, Shirley, NY 11967, USA

GNPFEPQARREERSMSAPGNLLVKEGFGEGGKSPELPGVQEDEAASTRTRPLEQK
LISEEDLAANDILDYKDDDDKV

Purity > 80% as determined by SDS-PAGE and Coomassie blue staining

Stability Stable for 3 months from receipt of products under proper storage and handling conditions.

Storage Store at -80 centigrade. Avoid repeated freeze-thaw cycles.

Concentration 50 µg/mL as determined by BCA

Storage Buffer 100 mM glycine, 25 mM Tris-HCl, pH 7.3.

GENE INFORMATION

Gene Name CAMKK1 calcium/calmodulin-dependent protein kinase kinase 1, alpha [Homo sapiens (human)]

Official Symbol CAMKK1

Synonyms CAMKK1; calcium/calmodulin-dependent protein kinase kinase 1, alpha; calcium/calmodulin-dependent protein kinase kinase 1; CAMKKA; DKFZp761M0423; MGC34095; caMKK 1; caM-KK 1; caM-KK alpha; CAMKK alpha protein; caM-kinase kinase 1; caM-kinase IV kinase; caM-kinase kinase alpha; calcium/calmodulin-dependent protein kinase kinase alpha;

Gene ID 84254

mRNA Refseq NM_032294

 Tel: 1-631-559-9269 1-516-512-3133

 Email: info@creative-biomart.com  Fax: 1-631-938-8127

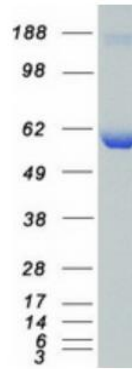
 45-1 Ramsey Road, Shirley, NY 11967, USA

Protein Refseq NP_115670

MIM 611411

UniProt ID Q8N5S9

SDS-PAGE



 Tel: 1-631-559-9269 1-516-512-3133

 Email: info@creative-biomart.com  Fax: 1-631-938-8127

 45-1 Ramsey Road, Shirley, NY 11967, USA