

## Recombinant Human CAMKK1 protein, His-tagged

Cat. No. CAMKK1-6755H Lot. No. (See product label)

### SPECIFICATION

<b>Product Overview</b>	Recombinant Human CAMKK1 protein(1-348 aa), fused with N-terminal His tag, was expressed in E.coli.
<b>Species</b>	Human
<b>Source</b>	E.coli
<b>ProteinLength</b>	1-348 aa
<b>Form</b>	The purified protein was lyophilized from sterile phosphate-buffered saline (PBS: 58 mM Na <sub>2</sub> HPO <sub>4</sub> , 17 mM NaH <sub>2</sub> PO <sub>4</sub> , 68 mM NaCl, pH 7.4). Prior to lyophilization, 5% (w/v) trehalose and 5% (w/v) mannitol were incorporated as cryoprotective excipients. The protein was eluted with a buffer containing 300 mM imidazole.
<b>AASequence</b>	MEGGPAVCCQDPRAELVERVAAIDVTHLEEADGGPEPTRNGVDPPPRARAASVIPG STSRLLPARPSLSARKLSLQERPAGSYLEAQAGPYATGPASHISPRAWRRPTIESHH VAISDAEDCVQLNQYKQLQSEIGKGAYGVVRLAYNESEDRHYAMKVLKSKKLLKQYG FRRRPPPRGSQAAQGGPAKQLLPLERVYQEIAILKLDHVN <sup>V</sup> VKLIEVLDDPAEDNLY LALQNQAQNIQLDSTNIAKPHSLLPSEQQDSGSTWAARSVFDLLRKGPVMEVPCDK PFSEEQARLYLRDVILGLEYLHCQKIVHRDIKPSNLLLGGDDGHVKIADFGVSNQFEGN DAQLSST
<b>Purity</b>	90%, by SDS-PAGE with Coomassie Brilliant Blue staining.
<b>Storage</b>	Store at 2-8°C for 1-2 weeks. Aliquot and store at -20°C to -80°C for up to 3 months,

 Tel: 1-631-559-9269 1-516-512-3133

 Email: [info@creative-biomart.com](mailto:info@creative-biomart.com)  Fax: 1-631-938-8127

 45-1 Ramsey Road, Shirley, NY 11967, USA

reconstitution with sterile water and addition of an equal volume of glycerol. Avoid repeat freeze-thaw cycles.

**Reconstitution**

Dissolve the product in 200 µl sterile water to achieve a working concentration of 0.25 g/µl. If experimental compatibility allows, mix the aqueous solution with an equal volume of glycerol (1:1 ratio) after initial reconstitution.

## GENE INFORMATION

**Gene Name** [CAMKK1 calcium/calmodulin-dependent protein kinase kinase 1, alpha \[ Homo sapiens \]](#)

**Official Symbol** [CAMKK1](#)

**Synonyms** CAMKK1; calcium/calmodulin-dependent protein kinase kinase 1, alpha; calcium/calmodulin-dependent protein kinase kinase 1; CAMKKA; DKFZp761M0423; MGC34095; caMKK 1; caM-KK 1; caM-KK alpha; CAMKK alpha protein; caM-kinase kinase 1; caM-kinase IV kinase; caM-kinase kinase alpha; calcium/calmodulin-dependent protein kinase kinase alpha;

**Gene ID** [84254](#)

**mRNA Refseq** [NM\\_032294](#)

**Protein Refseq** [NP\\_115670](#)

**MIM** [611411](#)

**UniProt ID** [Q8N5S9](#)

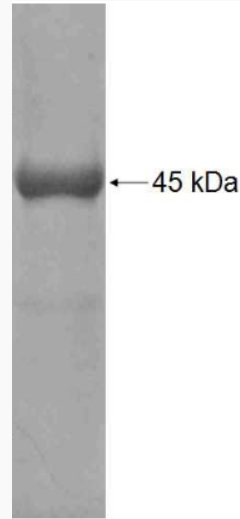
 Tel: 1-631-559-9269 1-516-512-3133

 Email: [info@creative-biomart.com](mailto:info@creative-biomart.com)  Fax: 1-631-938-8127

 45-1 Ramsey Road, Shirley, NY 11967, USA



SDS-PAGE



Tel: 1-631-559-9269 1-516-512-3133

Email: [info@creative-biomart.com](mailto:info@creative-biomart.com) Fax: 1-631-938-8127

45-1 Ramsey Road, Shirley, NY 11967, USA