

## Recombinant Human CAMKK2 Protein, GST-Tagged

**Cat. No.** CAMKK2-0341H    **Lot. No.** (See product label)

### SPECIFICATION

<b>Product Overview</b>	Human CAMKK2 full-length ORF (NP_705719.2, 1 a.a. - 541 a.a.) recombinant protein with GST-tag at N-terminal.
<b>Species</b>	Human
<b>Source</b>	Wheat Germ
<b>Description</b>	<p>The product of this gene belongs to the Serine/Threonine protein kinase family, and to the Ca(2+)/calmodulin-dependent protein kinase subfamily. The major isoform of this gene plays a role in the calcium/calmodulin-dependent (CaM) kinase cascade by phosphorylating the downstream kinases CaMK1 and CaMK4. Protein products of this gene also phosphorylate AMP-activated protein kinase (AMPK). This gene has its strongest expression in the brain and influences signalling cascades involved with learning and memory, neuronal differentiation and migration, neurite outgrowth, and synapse formation. Alternative splicing results in multiple transcript variants encoding distinct isoforms. The identified isoforms differ in their ability to undergo autophosphorylation and to phosphorylate downstream kinases. [provided by RefSeq, Jul 2012]</p>
<b>Molecular Mass</b>	86 kDa
<b>AA Sequence</b>	<p>MSSCVSSQPSSNRAAPQDELGGRGSSSSSESQKPCEALRGLSSLSIHLGMESFIVVT  ECEPGCAVDLGLARDRPLEADGQEVPLDTSQSARPHLSGRKLSLQERSQGGLAA  GGSLDMNGRCICPSLPYSPVSSPQSSPRLPRRPTVESHHSITGMQDCVQLNQYTL</p>

 Tel: 1-631-559-9269    1-516-512-3133

 Email: [info@creative-biomart.com](mailto:info@creative-biomart.com)     Fax: 1-631-938-8127

 45-1 Ramsey Road, Shirley, NY 11967, USA

KDEIGKGSYGVVKLAYNENDNTYYAMKVLSKKKLIRQAGFRRPPPRGTRPAPGGCI  
 QPRGPIEQVYQEIAILKKLDHPNVVKLVEVLDDPNEDHLYMVFELVNQGPVMEVPTL  
 KPLSEDQARFYFQDLIKGIEYLHYQKIIHRDIKPSNLLVGEDGHIKIADFGVSNEFKGS  
 DALLSNTVGTAPFMAPESLSETRKIFSGKALDVWAMGVTLYCFVFGQCPFMDERIM  
 CLHSKIKSQALEFPDQPDIAEDLKDLITRMLDKNPESRIVVPEIKLHPWVTRHGAEPLP  
 SEDENCTLVEVTEEEVENSVKHIPSLATVILVKT MIRKRSFGNPFEGSRREERSLSAP  
 GNLLTKQGS EDNLQGT DPPPVGEEEVLL

**Applications**  
 Enzyme-linked Immunoabsorbent Assay  
 Western Blot (Recombinant protein)  
 Antibody Production  
 Protein Array

**Notes**  
 Best use within three months from the date of receipt of this protein.

**Storage**  
 Store at -80 centigrade. Aliquot to avoid repeated freezing and thawing.

**Storage Buffer**  
 50 mM Tris-HCl, 10 mM reduced Glutathione, pH=8.0 in the elution buffer.

## GENE INFORMATION

**Gene Name**  
 CAMKK2 calcium/calmodulin-dependent protein kinase kinase 2, beta [ Homo sapiens ]

**Official Symbol**  
 CAMKK2

**Synonyms**  
 CAMKK2; calcium/calmodulin-dependent protein kinase kinase 2, beta;  
 calcium/calmodulin-dependent protein kinase kinase 2; CAMKK; CAMKKB;  
 KIAA0787; MGC15254; caM-KK 2; caM-KK beta; CAMKK beta protein; caM-kinase  
 kinase 2; caM-kinase kinase beta; calcium/calmodulin-dependent protein kinase beta;

Tel: 1-631-559-9269 1-516-512-3133

Email: [info@creative-biomart.com](mailto:info@creative-biomart.com) Fax: 1-631-938-8127

45-1 Ramsey Road, Shirley, NY 11967, USA

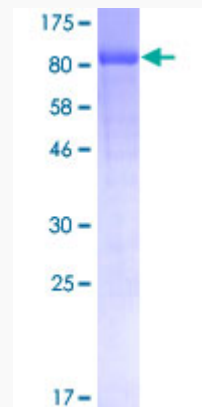
Gene ID 10645

mRNA Refseq NM\_006549

Protein Refseq NP\_006540

UniProt ID Q96RR4

Quality Control  
Testing



12.5% SDS-PAGE Stained with Coomassie Blue.

Tel: 1-631-559-9269 1-516-512-3133

Email: [info@creative-biomart.com](mailto:info@creative-biomart.com) Fax: 1-631-938-8127

45-1 Ramsey Road, Shirley, NY 11967, USA