

# Recombinant Human CAMKK2 Protein, Myc/DDK-tagged, C13 and N15-labeled

**Cat. No.** CAMKK2-1730H    **Lot. No.** (See product label)

## SPECIFICATION

<b>Product Overview</b>	CAMKK2 MS Standard C13 and N15-labeled recombinant protein (NP_757380) with a C-terminal MYC/DDK tag, was expressed in HEK293 cells.
<b>Species</b>	Human
<b>Source</b>	HEK293
<b>Description</b>	The product of this gene belongs to the Serine/Threonine protein kinase family, and to the Ca(2+)/calmodulin-dependent protein kinase subfamily. The major isoform of this gene plays a role in the calcium/calmodulin-dependent (CaM) kinase cascade by phosphorylating the downstream kinases CaMK1 and CaMK4. Protein products of this gene also phosphorylate AMP-activated protein kinase (AMPK). This gene has its strongest expression in the brain and influences signalling cascades involved with learning and memory, neuronal differentiation and migration, neurite outgrowth, and synapse formation. Alternative splicing results in multiple transcript variants encoding distinct isoforms. The identified isoforms differ in their ability to undergo autophosphorylation and to phosphorylate downstream kinases.
<b>Molecular Mass</b>	59.6 kDa
<b>Purity</b>	> 80% as determined by SDS-PAGE and Coomassie blue staining
<b>Stability</b>	Stable for 3 months from receipt of products under proper storage and handling conditions.

 Tel: 1-631-559-9269    1-516-512-3133

 Email: [info@creative-biomart.com](mailto:info@creative-biomart.com)     Fax: 1-631-938-8127

 45-1 Ramsey Road, Shirley, NY 11967, USA

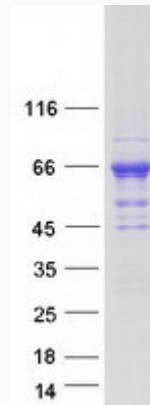
<b>Storage</b>	Store at -80 centigrade. Avoid repeated freeze-thaw cycles.
<b>Concentration</b>	50 µg/mL as determined by BCA
<b>Storage Buffer</b>	100 mM glycine, 25 mM Tris-HCl, pH 7.3.
<b>GENE INFORMATION</b>	
<b>Gene Name</b>	CAMKK2 calcium/calmodulin dependent protein kinase kinase 2 [ Homo sapiens (human) ]
<b>Official Symbol</b>	CAMKK2
<b>Synonyms</b>	CAMKK2; calcium/calmodulin-dependent protein kinase kinase 2, beta; calcium/calmodulin-dependent protein kinase kinase 2; CAMKK; CAMKKB; KIAA0787; MGC15254; caM-KK 2; caM-KK beta; CAMKK beta protein; caM-kinase kinase 2; caM-kinase kinase beta; calcium/calmodulin-dependent protein kinase beta;
<b>Gene ID</b>	10645
<b>mRNA Refseq</b>	NM_172226
<b>Protein Refseq</b>	NP_757380
<b>MIM</b>	615002
<b>UniProt ID</b>	Q96RR4

 Tel: 1-631-559-9269 1-516-512-3133

 Email: [info@creative-biomart.com](mailto:info@creative-biomart.com)  Fax: 1-631-938-8127

 45-1 Ramsey Road, Shirley, NY 11967, USA

**SDS-PAGE**



 Tel: 1-631-559-9269 1-516-512-3133

 Email: [info@creative-biomart.com](mailto:info@creative-biomart.com)  Fax: 1-631-938-8127

 45-1 Ramsey Road, Shirley, NY 11967, USA