

Recombinant Human CAMKK2 Protein, Myc/DDK-tagged, C13 and N15-labeled

Cat. No. CAMKK2-2493H **Lot. No.** (See product label)

SPECIFICATION

Product Overview

CAMKK2 MS Standard C13 and N15-labeled recombinant protein (NP_705719) with a C-terminal MYC/DDK tag, was expressed in HEK293 cells.

Species

Human

Source

HEK293

Description

The product of this gene belongs to the Serine/Threonine protein kinase family, and to the Ca(2+)/calmodulin-dependent protein kinase subfamily. The major isoform of this gene plays a role in the calcium/calmodulin-dependent (CaM) kinase cascade by phosphorylating the downstream kinases CaMK1 and CaMK4. Protein products of this gene also phosphorylate AMP-activated protein kinase (AMPK). This gene has its strongest expression in the brain and influences signalling cascades involved with learning and memory, neuronal differentiation and migration, neurite outgrowth, and synapse formation. Alternative splicing results in multiple transcript variants encoding distinct isoforms. The identified isoforms differ in their ability to undergo autophosphorylation and to phosphorylate downstream kinases.

Molecular Mass

59.6 kDa

AA Sequence

MSSCVSSQPSSNRAAPQDELGGRGSSSSSESQKPCEALRGLSSLSIHLGMESFIVVT
ECEPGCAVDLGLARDRPLEADGQEVPLDSSGSQARPHLSGRKLSLQERSQGGGLAA
GGSLDMNGRCICPSLPYSPVSSPQSSPRLPRRPTVESHHVSITGMQDCVQLNQYTL

 Tel: 1-631-559-9269 1-516-512-3133

 Email: info@creative-biomart.com  Fax: 1-631-938-8127

 45-1 Ramsey Road, Shirley, NY 11967, USA

KDEIGKGSYGVVKLAYNENDNTYYAMKVLSKKKLIRQAGFRRPPPRGTRPAPGGCI
 QPRGPIEQVYQEIAILKKLDHPNVVKLVEVLDDPNEDHLYMVFELVNQGPVMEVPTL
 KPLSEDQARFYFQDLIKGIEYLHYQKIIHRDIKPSNLLVGEDGHIKIADFGVSNEFKGS
 DALLSNTVGTAPFMAPESLSETRKIFSGKALDVWAMGVTLYCFVFGQCPFMDERIM
 CLHSKIKSQALEFPDQPDIAEDLKDLITRMLDKNPESRIVVPEIKLHPWVTRHGAEPLP
 SEDENCTLVEVTEEEVENSVKHIPSLATVILVKTMIRKRSFGNPFEGSRREERSLSAP
 GNLLTKQGSEDNLQGTDPVGGEEVLLTRTRPLEQKLISEEDLAANDILDYKDDDD
 KV

Purity > 80% as determined by SDS-PAGE and Coomassie blue staining

Stability Stable for 3 months from receipt of products under proper storage and handling conditions.

Storage Store at -80 centigrade. Avoid repeated freeze-thaw cycles.

Concentration 50 µg/mL as determined by BCA

Storage Buffer 100 mM glycine, 25 mM Tris-HCl, pH 7.3.

GENE INFORMATION

Gene Name CAMKK2 calcium/calmodulin dependent protein kinase kinase 2 [Homo sapiens (human)]

Official Symbol CAMKK2

Synonyms CAMKK2; calcium/calmodulin-dependent protein kinase kinase 2, beta; calcium/calmodulin-dependent protein kinase kinase 2; CAMKK; CAMKKB; KIAA0787; MGC15254; caM-KK 2; caM-KK beta; CAMKK beta protein; caM-kinase kinase 2; caM-kinase kinase beta; calcium/calmodulin-dependent protein kinase beta;

 Tel: 1-631-559-9269 1-516-512-3133

 Email: info@creative-biomart.com  Fax: 1-631-938-8127

 45-1 Ramsey Road, Shirley, NY 11967, USA

Gene ID 10645

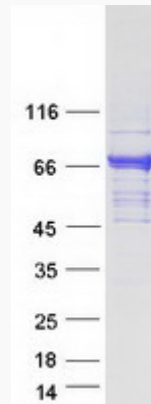
mRNA Refseq NM_153499

Protein Refseq NP_705719

MIM 615002

UniProt ID Q96RR4

SDS-PAGE



 Tel: 1-631-559-9269 1-516-512-3133

 Email: info@creative-biomart.com  Fax: 1-631-938-8127

 45-1 Ramsey Road, Shirley, NY 11967, USA