

# Recombinant Human CAMP Protein, Myc/DDK-tagged, C13 and N15-labeled

**Cat. No.** CAMP-2767H    **Lot. No.** (See product label)

## SPECIFICATION

<b>Product Overview</b>	CAMP MS Standard C13 and N15-labeled recombinant protein (NP_004336) with a C-terminal MYC/DDK tag, was expressed in HEK293 cells.
<b>Species</b>	Human
<b>Source</b>	HEK293
<b>Description</b>	This gene encodes a member of an antimicrobial peptide family, characterized by a highly conserved N-terminal signal peptide containing a cathelin domain and a structurally variable cationic antimicrobial peptide, which is produced by extracellular proteolysis from the C-terminus. In addition to its antibacterial, antifungal, and antiviral activities, the encoded protein functions in cell chemotaxis, immune mediator induction, and inflammatory response regulation.
<b>Molecular Mass</b>	19.3 kDa
<b>AA Sequence</b>	MKTQRDGHSLGRWSLVLLLLGLVMPLAIIAQVLSYKEAVLRAIDGINQRSSDANLYRL LDLDPRTMDGDPDTPKPVSTVKETVCPRTTQQSPEDCDFKKGDLVKRCMGTVTL NQARGSFDISCDKDNKRFBALLGDFFRKSKEKIGKEFKRIVQRIKDFLRNLVPRTESTR TRPLEQKLISEEDLAANDILDYKDDDDKV
<b>Purity</b>	> 80% as determined by SDS-PAGE and Coomassie blue staining
<b>Stability</b>	Stable for 3 months from receipt of products under proper storage and handling

 Tel: 1-631-559-9269    1-516-512-3133

 Email: [info@creative-biomart.com](mailto:info@creative-biomart.com)     Fax: 1-631-938-8127

 45-1 Ramsey Road, Shirley, NY 11967, USA

conditions.

**Storage** Store at -80 centigrade. Avoid repeated freeze-thaw cycles.

**Concentration** 50 µg/mL as determined by BCA

**Storage Buffer** 100 mM glycine, 25 mM Tris-HCl, pH 7.3.

## GENE INFORMATION

**Gene Name** [CAMP cathelicidin antimicrobial peptide \[ Homo sapiens \(human\) \]](#)

**Official Symbol** [CAMP](#)

**Synonyms** CAMP; cathelicidin antimicrobial peptide; CAP18; FALL 39; FALL39; LL37; 18 kDa cationic antimicrobial protein; CRAMP; HSD26; CAP-18; FALL-39;

**Gene ID** [820](#)

**mRNA Refseq** [NM\\_004345](#)

**Protein Refseq** [NP\\_004336](#)

**MIM** [600474](#)

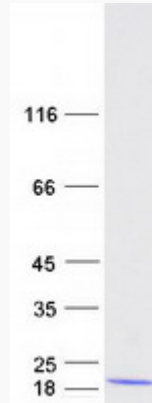
**UniProt ID** [P49913](#)

 Tel: 1-631-559-9269 1-516-512-3133

 Email: [info@creative-biomart.com](mailto:info@creative-biomart.com)  Fax: 1-631-938-8127

 45-1 Ramsey Road, Shirley, NY 11967, USA

**SDS-PAGE**



 Tel: 1-631-559-9269 1-516-512-3133

 Email: [info@creative-biomart.com](mailto:info@creative-biomart.com)  Fax: 1-631-938-8127

 45-1 Ramsey Road, Shirley, NY 11967, USA