

Recombinant Full Length Human CAMP Protein, C-Flag-tagged

Cat. No. CAMP-299HFL Lot. No. (See product label)

SPECIFICATION

Product Overview	Recombinant Full Length Human CAMP Protein, fused to Flag-tag at C-terminus, was expressed in Mammalian cells.
Species	Human
Source	Mammalian Cells
Description	This gene encodes a member of an antimicrobial peptide family, characterized by a highly conserved N-terminal signal peptide containing a cathelin domain and a structurally variable cationic antimicrobial peptide, which is produced by extracellular proteolysis from the C-terminus. In addition to its antibacterial, antifungal, and antiviral activities, the encoded protein functions in cell chemotaxis, immune mediator induction, and inflammatory response regulation.
Form	25 mM Tris HCl, pH 7.3, 100 mM glycine, 10% glycerol.
Molecular Mass	19.1 kDa
AA Sequence	MKTQRDGHSLGRWVSLVLLLLGLVMPLAIIAQVLSYKEAVLRAIDGINQRSSDANLYRL LDLDPRTMDGD PDTPKPVSTVETVCPRTTQQSPEDCDFKKDGLVKRCMGTVT LNQARGSFDISCDKDNKRFFALLGDDFR KSKEKIGKEFKRIVQRIKDFLRNLPRTSTRTRPLEQKLISEEDLAANDILDYKDDDD KV
Purity	> 80% as determined by SDS-PAGE and Coomassie blue staining.

 Tel: 1-631-559-9269 1-516-512-3133

 Email: info@creative-biomart.com  Fax: 1-631-938-8127

 45-1 Ramsey Road, Shirley, NY 11967, USA

Stability	Stable for 12 months from the date of receipt of the product under proper storage and handling conditions. Avoid repeated freeze-thaw cycles.
Storage	Store at -80 centigrade.
Concentration	>50 ug/mL as determined by microplate BCA method.
Preparation	Recombinant protein was captured through anti-DDK affinity column followed by conventional chromatography steps.
Protein Families	Secreted Protein, Transmembrane
Full Length	Full L.

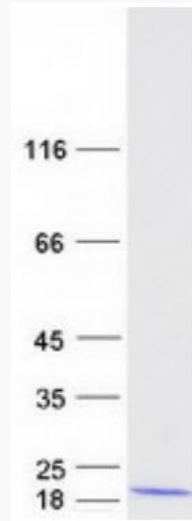
GENE INFORMATION

Gene Name	CAMP cathelicidin antimicrobial peptide [Homo sapiens (human)]
Official Symbol	CAMP
Synonyms	LL37; CAP18; CRAMP; HSD26; CAP-18; FALL39; FALL-39
Gene ID	820
mRNA Refseq	NM_004345.5
Protein Refseq	NP_004336.4
MIM	600474
UniProt ID	P49913

 Tel: 1-631-559-9269 1-516-512-3133

 Email: info@creative-biomart.com  Fax: 1-631-938-8127

 45-1 Ramsey Road, Shirley, NY 11967, USA



Coomassie blue staining of purified CAMP protein.

Tel: 1-631-559-9269 1-516-512-3133

Email: info@creative-biomart.com Fax: 1-631-938-8127

45-1 Ramsey Road, Shirley, NY 11967, USA