

Recombinant Human CANT1 Protein, GST-Tagged

Cat. No. CANT1-0348H Lot. No. (See product label)

SPECIFICATION

Product Overview	Human CANT1 full-length ORF (NP_620148.1, 1 a.a. - 401 a.a.) recombinant protein with GST-tag at N-terminal.
Species	Human
Source	Wheat Germ
Description	This protein encoded by this gene belongs to the apyrase family. It functions as a calcium-dependent nucleotidase with a preference for UDP. Mutations in this gene are associated with Desbuquois dysplasia with hand anomalies. Alternatively spliced transcript variants have been noted for this gene.[provided by RefSeq, Mar 2010]
Molecular Mass	71.2 kDa
AA Sequence	MPVQLSEHPEWNESMHSLRISVGGLPVLASMTKAADPRFRPRWKVILTFVGAAIL WLLCSHRPAPGRPPTHNAHNWRLGQAPANWYNDTYPLSPPQRTPAGIRYRIAVIAD LDTESRAQEENTWFSYLKKGYLTLSDSGDKVAVEWDKDHGVLESHLAEKGRGMEL SDLIVFNGKLYSVDDRTGVVYQIEGSKAVPWWILSDGDGTVEKGFKAEWLAVKDERL YVGGLGKEWTTTTGDVVENPEWVKVVGKGSVDHENWVSNYNALRAAAGIQPP GYLIHESACWSDTLQRWFFLPRRASQERYSEKDDERKGANLLLSASPDFGDIIVSH VGAVVPTHGFSSFKFIPNTDDQIIIVALKSEEDSGRVASYIMAFTLDGRFLLPETKIGSV KYEGIEFI
Applications	Enzyme-linked Immunoabsorbent Assay Western Blot (Recombinant protein)

 Tel: 1-631-559-9269 1-516-512-3133

 Email: info@creative-biomart.com  Fax: 1-631-938-8127

 45-1 Ramsey Road, Shirley, NY 11967, USA

	Antibody Production Protein Array
Notes	Best use within three months from the date of receipt of this protein.
Storage	Store at -80 centigrade. Aliquot to avoid repeated freezing and thawing.
Storage Buffer	50 mM Tris-HCl, 10 mM reduced Glutathione, pH=8.0 in the elution buffer.
GENE INFORMATION	
Gene Name	CANT1 calcium activated nucleotidase 1 [Homo sapiens]
Official Symbol	CANT1
Synonyms	CANT1; calcium activated nucleotidase 1; soluble calcium-activated nucleotidase 1; SCAN 1; SHAPY; Soluble Ca Activated Nucleotidase; isozyme 1; apyrase homolog; putative MAPK-activating protein PM09; putative NF-kappa-B-activating protein 107; soluble Ca-activated nucleotidase, isozyme 1; soluble calcium-activated nucleotidase SCAN-1; Ca ²⁺ -dependent endoplasmic reticulum nucleoside diphosphatase; micromelic dwarfism with vertebral and metaphyseal abnormalities and advanced carpotarsal ossification; DBQD; SCAN1; SCAN-1;
Gene ID	124583
mRNA Refseq	NM_001159772
Protein Refseq	NP_001153244
MIM	613165

 Tel: 1-631-559-9269 1-516-512-3133

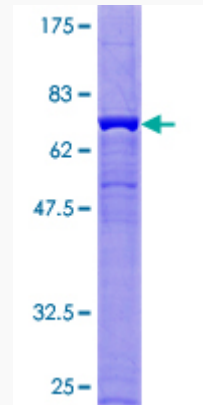
 Email: info@creative-biomart.com  Fax: 1-631-938-8127

 45-1 Ramsey Road, Shirley, NY 11967, USA

UniProt ID

Q8WVQ1

Quality Control
Testing



12.5% SDS-PAGE Stained with Coomassie Blue.

 Tel: 1-631-559-9269 1-516-512-3133

 Email: info@creative-biomart.com  Fax: 1-631-938-8127

 45-1 Ramsey Road, Shirley, NY 11967, USA