

Recombinant Human CANT1 Protein, His-tagged

Cat. No. CANT1-489H Lot. No. (See product label)

SPECIFICATION

Product Overview	Recombinant Human CANT1 protein(Gly 80-Ile 401), fused with N-terminal His tag, was expressed in HEK293.
Species	Human
Source	HEK293
ProteinLength	Gly 80-Ile 401
Tag	N-His
Form	Liquid in sterile PBS, pH7.4.
Molecular Mass	The protein has a calculated MW of 38 kDa.
Endotoxin	<1.0EU per 1µg (determined by the LAL method).
Purity	> 90 % as determined by SDS-PAGE.
Storage	Store it under sterile conditions at -80°C. It is recommended that the protein be aliquoted for optimal storage. Avoid repeated freeze-thaw cycles.
Concentration	1.0 mg/ml. Centrifuge the vial at 4°C before opening to recover the entire contents.
Reconstitution	It is recommended that sterile water be added to the vial to prepare a stock solution of

 Tel: 1-631-559-9269 1-516-512-3133

 Email: info@creative-biomart.com  Fax: 1-631-938-8127

 45-1 Ramsey Road, Shirley, NY 11967, USA

0.2 ug/ul. Centrifuge the vial at 4°C before opening to recover the entire contents.

AA Sequence

```

HHHHHHHHHHGSGGGSGGGSGQAPANWYNDTYPLSPQRTYPAGIRYRIAVIADLD
TESRAQEENTWFSYLKKGYLTLSDSGDKVAVEWDKDHGVLESHLAEKGRGMELSD
LIVFNGKLYSVDDRTGVVYQIEGSKAVPWVILSDGDGTVEKGFKAEWLAVKDERLYV
GGLGKEWTTTTGDVVNENPEWVKVVGKGSVDHENWVSNYNALRAAAGIQPPGY
LIHESACWSDTLQRWFFLPRRASQERYSEKDDERKGANLLLSASPDFGDIAVSHVG
AVVPTHGFSSFKFIPNTDDQIIVALKSEEDSGRVASYIMAFTLDGRFLLPETKIGSVKY
EGIEFI
    
```

GENE INFORMATION

Gene Name [CANT1 calcium activated nucleotidase 1 \[Homo sapiens \]](#)

Official Symbol [CANT1](#)

Synonyms

CANT1; calcium activated nucleotidase 1; soluble calcium-activated nucleotidase 1; SCAN 1; SHAPY; Soluble Ca Activated Nucleotidase; isozyme 1; apyrase homolog; putative MAPK-activating protein PM09; putative NF-kappa-B-activating protein 107; soluble Ca-activated nucleotidase, isozyme 1; soluble calcium-activated nucleotidase SCAN-1; Ca²⁺-dependent endoplasmic reticulum nucleoside diphosphatase; micromelic dwarfism with vertebral and metaphyseal abnormalities and advanced carpotarsal ossification; DBQD; SCAN1; SCAN-1;

Gene ID [124583](#)

mRNA Refseq [NM_001159772](#)

Protein Refseq [NP_001153244](#)

MIM [613165](#)

 Tel: 1-631-559-9269 1-516-512-3133

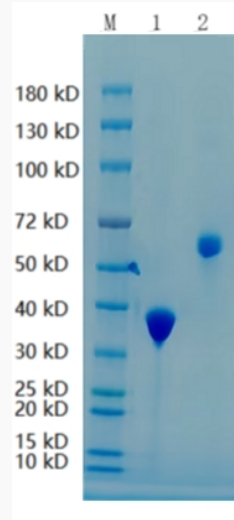
 Email: info@creative-biomart.com  Fax: 1-631-938-8127

 45-1 Ramsey Road, Shirley, NY 11967, USA


UniProt ID

Q8WVQ1

SDS-PAGE



Lane 1: CANT1-489H; Lane 2: BSA

 Tel: 1-631-559-9269 1-516-512-3133

 Email: info@creative-biomart.com  Fax: 1-631-938-8127

 45-1 Ramsey Road, Shirley, NY 11967, USA