

Recombinant Human CANT1 Protein, His-tagged

Cat. No. CANT1-585H Lot. No. (See product label)

SPECIFICATION

Product Overview	Recombinant Human CANT1(Ile107~Phe400) fused with His tag at N-terminal was expressed in E. coli.
Species	Human
Source	E.coli
ProteinLength	Ile107~Phe400
Description	This protein encoded by this gene belongs to the apyrase family. It functions as a calcium-dependent nucleotidase with a preference for UDP. Mutations in this gene are associated with Desbuquois dysplasia with hand anomalies. Alternatively spliced transcript variants have been noted for this gene.
Form	PBS, pH7.4, containing 0.01% SKL, 1mM DTT, 5% Trehalose and Proclin300.
Molecular Mass	36.4kDa
Endotoxin	<1.0EU per 1ug (determined by the LAL method)
Purity	> 95%
Applications	Positive Control; Immunogen; SDS-PAGE; WB. If bio-activity of the protein is needed, please check active protein

 Tel: 1-631-559-9269 1-516-512-3133

 Email: info@creative-biomart.com  Fax: 1-631-938-8127

 45-1 Ramsey Road, Shirley, NY 11967, USA

Stability The thermal stability is described by the loss rate. The loss rate was determined by accelerated thermal degradation test, that is, incubate the protein at 37 centigrade for 48h, and no obvious degradation and precipitation were observed. The loss rate is less than 5% within the expiration date under appropriate storage condition.

Storage Avoid repeated freeze/thaw cycles. Store at 2-8 centigrade for one month. Aliquot and store at -80 centigrade for 12 months.

Reconstitution Reconstitute in PBS or others

GENE INFORMATION

Gene Name [CANT1 calcium activated nucleotidase 1 \[Homo sapiens \]](#)

Official Symbol [CANT1](#)

Synonyms CANT1; calcium activated nucleotidase 1; soluble calcium-activated nucleotidase 1; SCAN 1; SHAPY; Soluble Ca Activated Nucleotidase; isozyme 1; apyrase homolog; putative MAPK-activating protein PM09; putative NF-kappa-B-activating protein 107; soluble Ca-activated nucleotidase, isozyme 1; soluble calcium-activated nucleotidase SCAN-1; Ca²⁺-dependent endoplasmic reticulum nucleoside diphosphatase; micromelic dwarfism with vertebral and metaphyseal abnormalities and advanced carpotarsal ossification; DBQD; SCAN1; SCAN-1;

Gene ID [124583](#)

mRNA Refseq [NM_001159772](#)

Protein Refseq [NP_001153244](#)

MIM [613165](#)

 Tel: 1-631-559-9269 1-516-512-3133

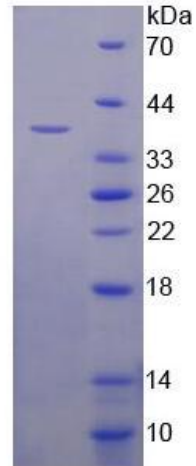
 Email: info@creative-biomart.com  Fax: 1-631-938-8127

 45-1 Ramsey Road, Shirley, NY 11967, USA



UniProt ID

Q8WVQ1



Tel: 1-631-559-9269 1-516-512-3133

Email: info@creative-biomart.com Fax: 1-631-938-8127

45-1 Ramsey Road, Shirley, NY 11967, USA