

Recombinant Human CANX Protein, GST-Tagged

Cat. No. CANX-0350H Lot. No. (See product label)

SPECIFICATION

Product Overview	Human CANX partial ORF (NP_001737.1, 504 a.a. - 592 a.a.) recombinant protein with GST-tag at N-terminal.
Species	Human
Source	Wheat Germ
Description	<p>This gene encodes a member of the calnexin family of molecular chaperones. The encoded protein is a calcium-binding, endoplasmic reticulum (ER)-associated protein that interacts transiently with newly synthesized N-linked glycoproteins, facilitating protein folding and assembly. It may also play a central role in the quality control of protein folding by retaining incorrectly folded protein subunits within the ER for degradation. Alternatively spliced transcript variants encoding the same protein have been described. [provided by RefSeq, Jul 2008]</p>
Molecular Mass	35.53 kDa
AA Sequence	SGKKQTSGMEYKKT DAPQPDVKEEEEEKEEEKDKGDEEEEGEEKLEEKQKSDAEE DGGTVSQEEEDRKPKAEDEILNRSPRNRKPRRE
Applications	Enzyme-linked Immunoabsorbent Assay Western Blot (Recombinant protein) Antibody Production Protein Array

 Tel: 1-631-559-9269 1-516-512-3133

 Email: info@creative-biomart.com  Fax: 1-631-938-8127

 45-1 Ramsey Road, Shirley, NY 11967, USA

Notes	Best use within three months from the date of receipt of this protein.
Storage	Store at -80 centigrade. Aliquot to avoid repeated freezing and thawing.
Storage Buffer	50 mM Tris-HCl, 10 mM reduced Glutathione, pH=8.0 in the elution buffer.

GENE INFORMATION

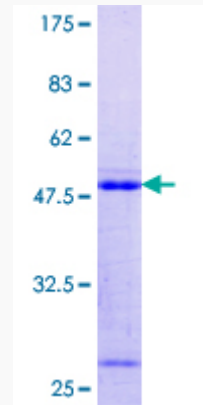
Gene Name	CANX calnexin [Homo sapiens]
Official Symbol	CANX
Synonyms	CANX; calnexin; CNX; IP90; major histocompatibility complex class I antigen binding protein p88; P90; major histocompatibility complex class I antigen-binding protein p88; FLJ26570;
Gene ID	821
mRNA Refseq	NM_001024649
Protein Refseq	NP_001019820
MIM	114217
UniProt ID	P27824

 Tel: 1-631-559-9269 1-516-512-3133

 Email: info@creative-biomart.com  Fax: 1-631-938-8127

 45-1 Ramsey Road, Shirley, NY 11967, USA

**Quality Control
Testing**



12.5% SDS-PAGE Stained with Coomassie Blue.

 Tel: 1-631-559-9269 1-516-512-3133

 Email: info@creative-biomart.com  Fax: 1-631-938-8127

 45-1 Ramsey Road, Shirley, NY 11967, USA