

# Recombinant Full Length Human CANX Protein, C-Flag-tagged

**Cat. No.** CANX-1595HFL    **Lot. No.** (See product label)

## SPECIFICATION

<b>Product Overview</b>	Recombinant Full Length Human CANX Protein, fused to Flag-tag at C-terminus, was expressed in Mammalian cells.
<b>Species</b>	Human
<b>Source</b>	Mammalian Cells
<b>Description</b>	This gene encodes a member of the calnexin family of molecular chaperones. The encoded protein is a calcium-binding, endoplasmic reticulum (ER)-associated protein that interacts transiently with newly synthesized N-linked glycoproteins, facilitating protein folding and assembly. It may also play a central role in the quality control of protein folding by retaining incorrectly folded protein subunits within the ER for degradation. Alternatively spliced transcript variants encoding different isoforms have been described.
<b>Form</b>	25 mM Tris HCl, pH 7.3, 100 mM glycine, 10% glycerol.
<b>Molecular Mass</b>	65.3 kDa
<b>AA Sequence</b>	MEGKWLLCMLLVLGTAIVEAHDGHDDDDVIDIEDDLDDVIEEVEDSKPDTTAPPSSPKV TYKAPVPTGEVY FADSFDRGTLGWSKAKKDDTDDEIAKYDGKWEVEEMKESKL PGDKGLVLMSSRAKHHAISAKLNKPFL FDTKPLIVQYEVNFQNGIECGGAYVKLLSKT PELNLDQFHDKTPYTIMFGPKCGEDYKLFHIFRHKPNP TGIYEEKHAKRPDADLKT YFTDKKTHLYTLILNPDNSFEILVDQSVVNSGNLLNDMTPPVNPSREIEDPE DRKPE DWDERPKIPDPEAVKPDDEWDEDAPAKIPDEEATKPEGWLDDEPEYVPDPDAEKPE

 Tel: 1-631-559-9269    1-516-512-3133

 Email: [info@creative-biomart.com](mailto:info@creative-biomart.com)     Fax: 1-631-938-8127

 45-1 Ramsey Road, Shirley, NY 11967, USA

DWDEDMDGEW EAPQIANPRCESAPGCGVWQRPVIDNPNYKGGKWKPPMIDNPSY  
 QGIWKPRKIPNPDDFFEDLEPFRMTPFS AIGLELWSMTSDIFFDNFIICADRRIVDDWA  
 NDGWGLKKAADGAAEPGVVGMIEAAEERPWLWVVYILT VALPVFLVILFCCSGKK  
 QTSGMEYKKTDPQPDVKEEEEEKEEEKDKGDEEEEGEEKLEEKQKSDAEEDG  
 GTVSQEEEDRKPKAEDEILNRSPNRKPRRETRTRPLEQKLISEEDLAANDILDYK  
 DDDDKV

<b>Purity</b>	> 80% as determined by SDS-PAGE and Coomassie blue staining.
<b>Stability</b>	Stable for 12 months from the date of receipt of the product under proper storage and handling conditions. Avoid repeated freeze-thaw cycles.
<b>Storage</b>	Store at -80 centigrade.
<b>Concentration</b>	>50 ug/mL as determined by microplate BCA method.
<b>Preparation</b>	Recombinant protein was captured through anti-DDK affinity column followed by conventional chromatography steps.
<b>Protein Families</b>	Druggable Genome, Transmembrane
<b>Protein Pathways</b>	Antigen processing and presentation
<b>Full Length</b>	Full L.

## GENE INFORMATION

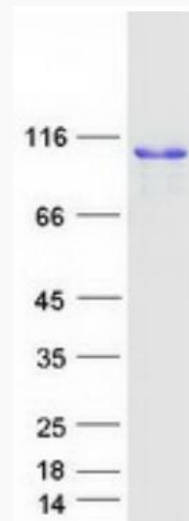
<b>Gene Name</b>	CANX calnexin [ Homo sapiens (human) ]
<b>Official Symbol</b>	CANX

 Tel: 1-631-559-9269 1-516-512-3133

 Email: [info@creative-biomart.com](mailto:info@creative-biomart.com)  Fax: 1-631-938-8127

 45-1 Ramsey Road, Shirley, NY 11967, USA

<b>Synonyms</b>	CNX; P90; IP90
<b>Gene ID</b>	821
<b>mRNA Refseq</b>	NM_001746.4
<b>Protein Refseq</b>	NP_001737.1
<b>MIM</b>	114217
<b>UniProt ID</b>	P27824



Coomassie blue staining of purified CANX protein.

 Tel: 1-631-559-9269 1-516-512-3133

 Email: [info@creative-biomart.com](mailto:info@creative-biomart.com)  Fax: 1-631-938-8127

 45-1 Ramsey Road, Shirley, NY 11967, USA