

## Recombinant Human CAP1 Protein, GST-Tagged

Cat. No. CAP1-0351H Lot. No. (See product label)

### SPECIFICATION

<b>Product Overview</b>	Human CAP1 full-length ORF (AAH13963, 1 a.a. - 475 a.a.) recombinant protein with GST-tag at N-terminal.
<b>Species</b>	Human
<b>Source</b>	Wheat Germ
<b>Description</b>	The protein encoded by this gene is related to the <i>S. cerevisiae</i> CAP protein, which is involved in the cyclic AMP pathway. The human protein is able to interact with other molecules of the same protein, as well as with CAP2 and actin. Alternatively spliced transcript variants encoding different isoforms have been identified. [provided by RefSeq, Aug 2016]
<b>Molecular Mass</b>	77.99 kDa
<b>AA Sequence</b>	MADMQNLVERLERAVGRLEAVSHTSDMHRGYADSPSKAGAAPYVQAFDSSLGAPV AEYLKISKEIGGDVQKHAEMVHTGLKLERALLVTASQCQQPAENKLSDLLAPISEQIK EVITFREKNRGSKLFNHL SAVSESIQALGWVAMAPKPGPYVKEMNDAAMFYTNRVL KEYKDVDKHKHVDWVKAYLSIWTELQAYIKEFHTTGLAWSKTGPVAKELSGLPSPGSPS AGSGPPPPPPGPPPPPVSTSSGSDESASRSALFAQINQGESITHALKHVSDDMKTH KNPALKAQSGPVRSGPKPFSAPKPQTSPSPKRATKKEPAVLELEGKKWRVENQEN VSNLVIEDTELKQVAYIYKCVNTTLQIKGKINSITVDNCKKLGLVFDDVVGIVEIINSKDV KVQVMGKVPTISINKTDGCHAYLSKNSLDCEIVSAKSSEMNVLIPTEGGDFNEFPVPE QFKTLWNGQKLVTTVTEIAG

 Tel: 1-631-559-9269 1-516-512-3133

 Email: [info@creative-biomart.com](mailto:info@creative-biomart.com)  Fax: 1-631-938-8127

 45-1 Ramsey Road, Shirley, NY 11967, USA

<b>Applications</b>	Enzyme-linked Immunoabsorbent Assay Western Blot (Recombinant protein) Antibody Production Protein Array
<b>Notes</b>	Best use within three months from the date of receipt of this protein.
<b>Storage</b>	Store at -80 centigrade. Aliquot to avoid repeated freezing and thawing.
<b>Storage Buffer</b>	50 mM Tris-HCl, 10 mM reduced Glutathione, pH=8.0 in the elution buffer.

## GENE INFORMATION

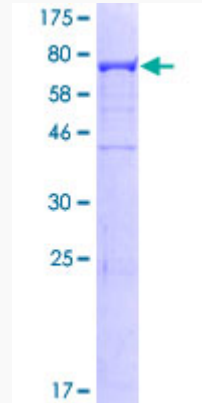
<b>Gene Name</b>	CAP1 CAP, adenylate cyclase-associated protein 1 (yeast) [ Homo sapiens ]
<b>Official Symbol</b>	CAP1
<b>Synonyms</b>	CAP1; CAP, adenylate cyclase-associated protein 1 (yeast); adenylyl cyclase-associated protein 1; CAP; CAP 1; CAP1-PEN;
<b>Gene ID</b>	10487
<b>mRNA Refseq</b>	NM_001105530
<b>Protein Refseq</b>	NP_001099000
<b>UniProt ID</b>	Q01518

 Tel: 1-631-559-9269 1-516-512-3133

 Email: [info@creative-biomart.com](mailto:info@creative-biomart.com)  Fax: 1-631-938-8127

 45-1 Ramsey Road, Shirley, NY 11967, USA

**Quality Control  
Testing**



12.5% SDS-PAGE Stained with Coomassie Blue.

 Tel: 1-631-559-9269 1-516-512-3133

 Email: [info@creative-biomart.com](mailto:info@creative-biomart.com)  Fax: 1-631-938-8127

 45-1 Ramsey Road, Shirley, NY 11967, USA