

# Recombinant Human CAP1 Protein, Myc/DDK-tagged, C13 and N15-labeled

**Cat. No.** CAP1-5579H    **Lot. No.** (See product label)

## SPECIFICATION

### Product Overview

CAP1 MS Standard C13 and N15-labeled recombinant protein (NP\_001099000) with a C-terminal MYC/DDK tag, was expressed in HEK293 cells.

### Species

Human

### Source

HEK293

### Description

The protein encoded by this gene is related to the *S. cerevisiae* CAP protein, which is involved in the cyclic AMP pathway. The human protein is able to interact with other molecules of the same protein, as well as with CAP2 and actin. Alternatively spliced transcript variants encoding different isoforms have been identified.

### Molecular Mass

51.7 kDa

### AA Sequence

MADMQNLVERLERAVGRLEAVSHTSDMHRGYADSPSKAGAAPYVQAFDSLLAGPV  
 AEYLKISKEIGGDVQKHAEMVHTGLKLERALLVTASQCQQPAENKLSDLLAPISEQIK  
 EVITFREKNRGSKLFNHL SAVSESIQALGWVAMAPKPGPYVKEMNDAAMFYTNRVL  
 KEYKDVDKHKHVDWVKAYLSIWTELQAYIKEFHTTGLAWSKTGPVAKELSGLPSPGS  
 AGSGPPPPPPGPPPPPVSTSSGSDESASRSALFAQINQGESITHALKHVSDDMKTH  
 KNPALKAQSGPVRSGPKPFSAPKPQTSPSPKRATKKEPAVLELEGKKWRVENQEN  
 VSNLVIEDTELKQVAYIYKCVNTTLQIKGKINSITVDNCKKLGLVFDDVVGIVEIINSKDV  
 KVQVMGKVPTISINKTDGCHAYLSKNSLDCEIVSAKSSEMNVLIPTEGGDFNEFPVPE  
 QFKTLWNGQKLVTTVTEIAGTRTRPLEQKLISEEDLAANDILDYKDDDDKV

 Tel: 1-631-559-9269    1-516-512-3133

 Email: [info@creative-biomart.com](mailto:info@creative-biomart.com)     Fax: 1-631-938-8127

 45-1 Ramsey Road, Shirley, NY 11967, USA

<b>Purity</b>	> 80% as determined by SDS-PAGE and Coomassie blue staining
<b>Stability</b>	Stable for 3 months from receipt of products under proper storage and handling conditions.
<b>Storage</b>	Store at -80 centigrade. Avoid repeated freeze-thaw cycles.
<b>Concentration</b>	50 µg/mL as determined by BCA
<b>Storage Buffer</b>	100 mM glycine, 25 mM Tris-HCl, pH 7.3.

## GENE INFORMATION

<b>Gene Name</b>	CAP1 cyclase associated actin cytoskeleton regulatory protein 1 [ Homo sapiens (human) ]
<b>Official Symbol</b>	CAP1
<b>Synonyms</b>	CAP1; CAP, adenylate cyclase-associated protein 1 (yeast); adenylyl cyclase-associated protein 1; CAP; CAP 1; CAP1-PEN;
<b>Gene ID</b>	10487
<b>mRNA Refseq</b>	NM_001105530
<b>Protein Refseq</b>	NP_001099000
<b>MIM</b>	617801
<b>UniProt ID</b>	Q01518

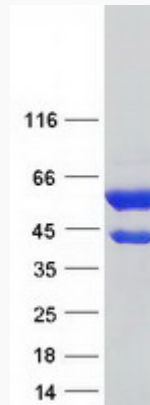
 Tel: 1-631-559-9269 1-516-512-3133

 Email: [info@creative-biomart.com](mailto:info@creative-biomart.com)  Fax: 1-631-938-8127

 45-1 Ramsey Road, Shirley, NY 11967, USA



SDS-PAGE



Tel: 1-631-559-9269 1-516-512-3133

Email: [info@creative-biomart.com](mailto:info@creative-biomart.com) Fax: 1-631-938-8127

45-1 Ramsey Road, Shirley, NY 11967, USA