

Recombinant Full Length Human CAP1 Protein, C-Flag-tagged

Cat. No. CAP1-622HFL Lot. No. (See product label)

SPECIFICATION

Product Overview	Recombinant Full Length Human CAP1 Protein, fused to Flag-tag at C-terminus, was expressed in Mammalian cells.
Species	Human
Source	Mammalian Cells
Description	The protein encoded by this gene is related to the <i>S. cerevisiae</i> CAP protein, which is involved in the cyclic AMP pathway. The human protein is able to interact with other molecules of the same protein, as well as with CAP2 and actin. Alternatively spliced transcript variants encoding different isoforms have been identified.
Form	25 mM Tris HCl, pH 7.3, 100 mM glycine, 10% glycerol.
Molecular Mass	51.5 kDa
AA Sequence	MADMQNLVERLERAVGRLEAVSHTSDMHRGYADSPSKAGAAPYVQAFDSLLAGPV AEYLKISKEIGGDVQ KHAEMVHTGLKLERALLVTASQCQQAENKLSDLLAPISESIQK EVITFREKNRGSKLFNHL SAVSESIQA LGWVAMAPKPGPYVKEMNDAAMFYTNRVL KEYKDVDKHHVDWVKAYLSIWTELQAYIKEFHHTGLAWSKT GPVAKELSGLPSPGPS AGSGPPPPPPGPPPPVSTSSGSDSASRSALFAQINQGESITHALKHVSDDMKT H KNPALKAQSGPVRSRSGPKPFSAPKPQTSPSPKRATKKEPAVLELEGKKWRVENQEN VSNLVIEDTELKQV AYIYKCVNTTLQIKGKINSITVDNCKKLGVLVDDVVGIVEIINSKD VKVQVMGKVPTISINKTDGCHAYL SKNSLDCEIVSAKSSEMNVLIPTEGGDFNEFPVPEQFKTLWNGQKLVTTVTEIAGTR

Tel: 1-631-559-9269 1-516-512-3133

Email: info@creative-biomart.com Fax: 1-631-938-8127

45-1 Ramsey Road, Shirley, NY 11967, USA

TRPLEQKLISEEDLAANDILDYKDDDDKV

Purity > 80% as determined by SDS-PAGE and Coomassie blue staining.

Stability Stable for 12 months from the date of receipt of the product under proper storage and handling conditions. Avoid repeated freeze-thaw cycles.

Storage Store at -80 centigrade.

Concentration >50 ug/mL as determined by microplate BCA method.

Preparation Recombinant protein was captured through anti-DDK affinity column followed by conventional chromatography steps.

Protein Families Druggable Genome

Full Length Full L.

GENE INFORMATION

Gene Name CAP1 cyclase associated actin cytoskeleton regulatory protein 1 [Homo sapiens (human)]

Official Symbol CAP1

Synonyms CAP; CAP1-PEN

Gene ID 10487

mRNA Refseq NM_006367.4

 Tel: 1-631-559-9269 1-516-512-3133

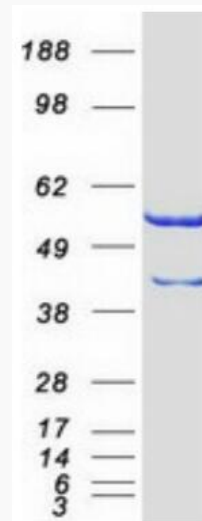
 Email: info@creative-biomart.com  Fax: 1-631-938-8127

 45-1 Ramsey Road, Shirley, NY 11967, USA

Protein Refseq NP_006358.2

MIM 617801

UniProt ID Q01518



Coomassie blue staining of purified CAP1 protein.

 Tel: 1-631-559-9269 1-516-512-3133

 Email: info@creative-biomart.com  Fax: 1-631-938-8127

 45-1 Ramsey Road, Shirley, NY 11967, USA