

## Recombinant Human CAPG Protein, GST-Tagged

Cat. No. CAPG-0353H Lot. No. (See product label)

### SPECIFICATION

**Product Overview** Human CAPG full-length ORF (AAH00728.1, 1 a.a. - 348 a.a.) recombinant protein with GST-tag at N-terminal.

**Species** Human

**Source** Wheat Germ

**Description** This gene encodes a member of the gelsolin/villin family of actin-regulatory proteins. The encoded protein reversibly blocks the barbed ends of F-actin filaments in a Ca<sup>2+</sup> and phosphoinositide-regulated manner, but does not sever preformed actin filaments. By capping the barbed ends of actin filaments, the encoded protein contributes to the control of actin-based motility in non-muscle cells. Alternatively spliced transcript variants have been observed for this gene. [provided by RefSeq, Jan 2012]

**Molecular Mass** 63.8 kDa

**AA Sequence**

```

MYTAIPQSGSPFPGSVQDPGLHVWRVEKLPVPVAQENQGVFFSGDSYLVLHNGP
EEVSHLHLWIGQQSSRDEQGACAVLAVHLNLTLLGERPVQHREVQGNESDLFMSYF
PRGLKYQEGGVESAFHKTSTGAPAAIKKLYQVKGKKNIRATERALNWDSFNTGDCFI
LDLGQNIFAWCGGKSNILERNKARDLALAIRDSERQGKAQVEIVTDGEEPAEMIQVL
GPKPALKEGNPEEDLTADKANAQAAAALYKVSDATGQMNLTKVADSSPFALELLISDD
CFVLDNGLCGKIYWKGRKANEKERQAALQVAEGFISRMQYAPNTQVEILPQGRESP
IFKQFFKDWK
    
```

 Tel: 1-631-559-9269 1-516-512-3133

 Email: [info@creative-biomart.com](mailto:info@creative-biomart.com)  Fax: 1-631-938-8127

 45-1 Ramsey Road, Shirley, NY 11967, USA

<b>Applications</b>	Enzyme-linked Immunoabsorbent Assay Western Blot (Recombinant protein) Antibody Production Protein Array
<b>Notes</b>	Best use within three months from the date of receipt of this protein.
<b>Storage</b>	Store at -80 centigrade. Aliquot to avoid repeated freezing and thawing.
<b>Storage Buffer</b>	50 mM Tris-HCl, 10 mM reduced Glutathione, pH=8.0 in the elution buffer.

## GENE INFORMATION

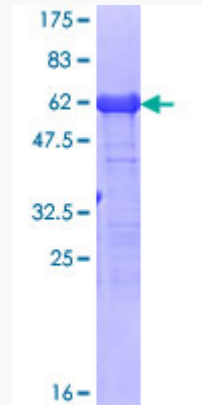
<b>Gene Name</b>	CAPG capping protein (actin filament), gelsolin-like [ Homo sapiens ]
<b>Official Symbol</b>	CAPG
<b>Synonyms</b>	CAPG; capping protein (actin filament), gelsolin-like; AFCP; macrophage-capping protein; macrophage capping protein; MCP; gelsolin-like capping protein; actin regulatory protein CAP-G; actin-regulatory protein CAP-G;
<b>Gene ID</b>	822
<b>mRNA Refseq</b>	NM_001256139
<b>Protein Refseq</b>	NP_001243068
<b>MIM</b>	153615
<b>UniProt ID</b>	P40121

 Tel: 1-631-559-9269 1-516-512-3133

 Email: [info@creative-biomart.com](mailto:info@creative-biomart.com)  Fax: 1-631-938-8127

 45-1 Ramsey Road, Shirley, NY 11967, USA

**Quality Control  
Testing**



12.5% SDS-PAGE Stained with Coomassie Blue.

 Tel: 1-631-559-9269 1-516-512-3133

 Email: [info@creative-biomart.com](mailto:info@creative-biomart.com)  Fax: 1-631-938-8127

 45-1 Ramsey Road, Shirley, NY 11967, USA