

Recombinant Human CAPG Protein, Myc/DDK-tagged, C13 and N15-labeled

Cat. No. CAPG-3108H Lot. No. (See product label)

SPECIFICATION

Product Overview	CAPG MS Standard C13 and N15-labeled recombinant protein (NP_001738) with a C-terminal MYC/DDK tag, was expressed in HEK293 cells.
Species	Human
Source	HEK293
Description	This gene encodes a member of the gelsolin/villin family of actin-regulatory proteins. The encoded protein reversibly blocks the barbed ends of F-actin filaments in a Ca ²⁺ and phosphoinositide-regulated manner, but does not sever preformed actin filaments. By capping the barbed ends of actin filaments, the encoded protein contributes to the control of actin-based motility in non-muscle cells. Alternatively spliced transcript variants have been observed for this gene.
Molecular Mass	38.5 kDa
AA Sequence	<p>MYTAIPQSGSPFPGSVQDPGLHVWRVEKLPVPVAQENQGVFFSGDSYLVLHNGP EEVSHLHLWIGQQSSRDEQGACAVLAVHLNLTLLGERPVQHREVQGNESDLFMSYF PRGLKYQEGGVESAFHKTSTGAPAAIKKLYQVKGKKNIRATERALNWDSFNTGDCFI LDLGQNIFAWCGGKSNILERNKARDLALAIRDSERQGKAQVEIVTDGEEPAEMIQVL GPKPALKEGNPEEDLTADKANAQAAAALYKVSDATGQMNLTKVADSSPFALELLISDD CFVLDNGLCGKIYWKGRKANEKERQAALQVAEGFISRMQYAPNTQVEILPQGRESP IFKQFFKDWKTRTRPLEQKLISEEDLAANDILDYKDDDDKV</p>

 Tel: 1-631-559-9269 1-516-512-3133

 Email: info@creative-biomart.com  Fax: 1-631-938-8127

 45-1 Ramsey Road, Shirley, NY 11967, USA

Purity	> 80% as determined by SDS-PAGE and Coomassie blue staining
Stability	Stable for 3 months from receipt of products under proper storage and handling conditions.
Storage	Store at -80 centigrade. Avoid repeated freeze-thaw cycles.
Concentration	50 µg/mL as determined by BCA
Storage Buffer	100 mM glycine, 25 mM Tris-HCl, pH 7.3.

GENE INFORMATION

Gene Name	CAPG capping actin protein, gelsolin like [Homo sapiens (human)]
Official Symbol	CAPG
Synonyms	CAPG; capping protein (actin filament), gelsolin-like; AFCP; macrophage-capping protein; macrophage capping protein; MCP; gelsolin-like capping protein; actin regulatory protein CAP-G; actin-regulatory protein CAP-G;
Gene ID	822
mRNA Refseq	NM_001747
Protein Refseq	NP_001738
MIM	153615
UniProt ID	P40121

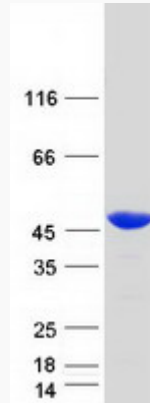
 Tel: 1-631-559-9269 1-516-512-3133

 Email: info@creative-biomart.com  Fax: 1-631-938-8127

 45-1 Ramsey Road, Shirley, NY 11967, USA



SDS-PAGE



Tel: 1-631-559-9269 1-516-512-3133

Email: info@creative-biomart.com Fax: 1-631-938-8127

45-1 Ramsey Road, Shirley, NY 11967, USA