

## Recombinant Human CAPN1 Protein, GST-Tagged

Cat. No. CAPN1-0355H Lot. No. (See product label)

### SPECIFICATION

<b>Product Overview</b>	Human CAPN1 partial ORF (AAH08751, 610 a.a. - 714 a.a.) recombinant protein with GST-tag at N-terminal.
<b>Species</b>	Human
<b>Source</b>	Wheat Germ
<b>Description</b>	<p>The calpains, calcium-activated neutral proteases, are nonlysosomal, intracellular cysteine proteases. The mammalian calpains include ubiquitous, stomach-specific, and muscle-specific proteins. The ubiquitous enzymes consist of heterodimers with distinct large, catalytic subunits associated with a common small, regulatory subunit. This gene encodes the large subunit of the ubiquitous enzyme, calpain 1. Several transcript variants encoding two different isoforms have been found for this gene. [provided by RefSeq, Nov 2010]</p>
<b>Molecular Mass</b>	37.18 kDa
<b>AA Sequence</b>	FNILWNRIRNYLSIFRKFDLDKSGSMSAYEMRMAIESAGFKLNKKLYELIITRYSEPD AVDFDNFVCCLVRLLETMFRFFKTLDTDLGCVTFDLFKWLQLTMFA
<b>Applications</b>	<p>Enzyme-linked Immunoabsorbent Assay            Western Blot (Recombinant protein)            Antibody Production            Protein Array</p>

 Tel: 1-631-559-9269 1-516-512-3133

 Email: [info@creative-biomart.com](mailto:info@creative-biomart.com)  Fax: 1-631-938-8127

 45-1 Ramsey Road, Shirley, NY 11967, USA

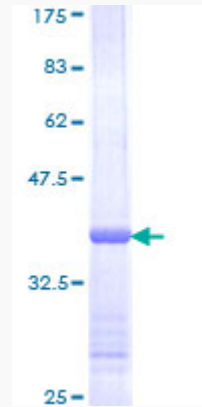
<b>Notes</b>	Best use within three months from the date of receipt of this protein.
<b>Storage</b>	Store at -80 centigrade. Aliquot to avoid repeated freezing and thawing.
<b>Storage Buffer</b>	50 mM Tris-HCl, 10 mM reduced Glutathione, pH=8.0 in the elution buffer.
<b>GENE INFORMATION</b>	
<b>Gene Name</b>	CAPN1 calpain 1, (mu/l) large subunit [ Homo sapiens ]
<b>Official Symbol</b>	CAPN1
<b>Synonyms</b>	CAPN1; calpain 1, (mu/l) large subunit; calpain-1 catalytic subunit; CANP; CANPL1; muCANP; muCL; CANP 1; calpain mu-type; micromolar-calpain; calpain-1 large subunit; calpain, large polypeptide L1; calcium-activated neutral proteinase 1; cell proliferation-inducing protein 30; cell proliferation-inducing gene 30 protein; CANP1;
<b>Gene ID</b>	823
<b>mRNA Refseq</b>	NM_001198868
<b>Protein Refseq</b>	NP_001185797
<b>MIM</b>	114220
<b>UniProt ID</b>	P07384

 Tel: 1-631-559-9269 1-516-512-3133

 Email: [info@creative-biomart.com](mailto:info@creative-biomart.com)  Fax: 1-631-938-8127

 45-1 Ramsey Road, Shirley, NY 11967, USA

**Quality Control  
Testing**



12.5% SDS-PAGE Stained with Coomassie Blue.

 Tel: 1-631-559-9269 1-516-512-3133

 Email: [info@creative-biomart.com](mailto:info@creative-biomart.com)  Fax: 1-631-938-8127

 45-1 Ramsey Road, Shirley, NY 11967, USA