

## Recombinant Human CAPN10 Protein, His-tagged

Cat. No. CAPN10-361H Lot. No. (See product label)

### SPECIFICATION

|                         |  |
|-------------------------|--|
| <b>Product Overview</b> | Recombinant Human CAPN10 Protein (Thr322-Gln654) with N-His tag was expressed in E. coli.  |
| <b>Species</b>          | Human  |
| <b>Source</b>           | E.coli   |
| <b>ProteinLength</b>    | Thr322-Gln654  |
| <b>Description</b>      | <p>Calpains represent a ubiquitous, well-conserved family of calcium-dependent cysteine proteases. The calpain proteins are heterodimers consisting of an invariant small subunit and variable large subunits. The large catalytic subunit has four domains: domain I, the N-terminal regulatory domain that is processed upon calpain activation; domain II, the protease domain; domain III, a linker domain of unknown function; and domain IV, the calmodulin-like calcium-binding domain. This gene encodes a large subunit. It is an atypical calpain in that it lacks the calmodulin-like calcium-binding domain and instead has a divergent C-terminal domain. It is similar in organization to calpains 5 and 6. This gene is associated with type 2 or non-insulin-dependent diabetes mellitus (NIDDM), and is located within the NIDDM1 region. Multiple alternative transcript variants have been described for this gene.</p> |
| <b>Form</b>             | Freeze-dried powder  |
| <b>Molecular Mass</b>   | Predicted Molecular Mass: 40.2 kDa<br>Accurate Molecular Mass: 40 kDa  |

 Tel: 1-631-559-9269 1-516-512-3133

 Email: [info@creative-biomart.com](mailto:info@creative-biomart.com)  Fax: 1-631-938-8127

 45-1 Ramsey Road, Shirley, NY 11967, USA

|                       |  |
|-----------------------|--|
| <b>Purity</b>         | > 90%  |
| <b>Applications</b>   | Positive Control; Immunogen; SDS-PAGE; WB.   |
| <b>Stability</b>      | The thermal stability is described by the loss rate. The loss rate was determined by accelerated thermal degradation test, that is, incubate the protein at 37 centigrade for 48h, and no obvious degradation and precipitation were observed. The loss rate is less than 5% within the expiration date under appropriate storage condition. |
| <b>Storage</b>        | Avoid repeated freeze/thaw cycles. Store at 2-8 centigrade for one month. Aliquot and store at -80 centigrade for 12 months.   |
| <b>Storage Buffer</b> | 20mM Tris, 150mM NaCl, pH8.0, containing 1mM EDTA, 1mM DTT, 0.01% SKL, 5% Trehalose and Proclin300.  |
| <b>Reconstitution</b> | Reconstitute in sterile water to a concentration of 0.1-1.0 mg/mL. Do not vortex.  |

## GENE INFORMATION

|                        |   |
|------------------------|---|
| <b>Gene Name</b>       | CAPN10 calpain 10 [ Homo sapiens (human) ]  |
| <b>Official Symbol</b> | CAPN10  |
| <b>Synonyms</b>        | CAPN10; calpain 10; calpain-10; calpain-like protease CAPN10; calcium-activated neutral proteinase 10; CANP10; NIDDM1 |
| <b>Gene ID</b>         | 11132   |
| <b>mRNA Refseq</b>     | NM_023083   |
| <b>Protein Refseq</b>  | NP_075571   |

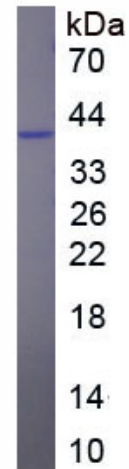
 Tel: 1-631-559-9269 1-516-512-3133

 Email: [info@creative-biomart.com](mailto:info@creative-biomart.com)  Fax: 1-631-938-8127

 45-1 Ramsey Road, Shirley, NY 11967, USA

MIM 605286

UniProt ID Q9HC96



Tel: 1-631-559-9269 1-516-512-3133

Email: [info@creative-biomart.com](mailto:info@creative-biomart.com) Fax: 1-631-938-8127

45-1 Ramsey Road, Shirley, NY 11967, USA