

Recombinant Full Length Human CAPN13 Protein, C-Flag-tagged

Cat. No. CAPN13-1878HFL **Lot. No.** (See product label)

SPECIFICATION

Product Overview	Recombinant Full Length Human CAPN13 Protein, fused to Flag-tag at C-terminus, was expressed in Mammalian cells.
Species	Human
Source	Mammalian Cells
Description	The calpains, calcium-activated neutral proteases, are nonlysosomal, intracellular cysteine proteases. The mammalian calpains include ubiquitous, stomach-specific, and muscle-specific proteins. The ubiquitous enzymes consist of heterodimers with distinct large, catalytic subunits associated with a common small, regulatory subunit. This gene encodes a member of the calpain large subunit family.
Form	25 mM Tris HCl, pH 7.3, 100 mM glycine, 10% glycerol.
Molecular Mass	76.5 kDa
AA Sequence	MAYYQEPSVETSIIKFKDQDFTTLRDHCLSMGRTFKDETFFAADSSIGQKLLQEKRLS NVIWKRPQDLPG GPPHFILDDISRFDIQQGAADCWFLAALGSLTQNPQYRQKILM VQSFSHQYAGIFRFRFWQCGQWVEVV IDDRLPVQGDKCLFVRPRHQNQEFWPC LEKAYAKLLGSYSDDLHYGFLEDALVDLTGGVITNIHLHSSPV DLVKAVKTATKAGSLIT CATPSGPTDTAQAMENGLVSLHAYTVTGAEQIQYRRGWEEIISLWNPWGWGET E WRGRWSDGSQEWEEETCDPRKSQLHKKREDGEFWMSCQDFQKFIAMFICSEIPIT LDHGNTLHEGWSQI MFRKQVILGNTAGGPRNDAQFNFSVQEPMEGTNVVVCVTV

 Tel: 1-631-559-9269 1-516-512-3133

 Email: info@creative-biomart.com  Fax: 1-631-938-8127

 45-1 Ramsey Road, Shirley, NY 11967, USA

VTPSNLKAEDAKFPLDFQVILAGSQRFRE KFPPVFFSSFRNTVQSSNNKFRRNFTM
 TYHLSPGNYVVVAQTRRKSAEFLLRIFLKMPDSDRHLSSHFNL RMKGSPSEHGSQQ
 SIFNRYAQQRLDIDATQLQGLLNQELLTGPPGDMFSLDECRLVALMELKVNGRLDQ
 EEFARLWKRLVHYQHVFQKVQTSPGVLLSSDLWKAIENTDFLRGIFISRELLHLVTLR
 YSDSVGRVSFPS LVCFLMRLEAMAKTFRNLSKDGKGLYLTEMEWMSLVMYN TRT
 RPLEQKLISEEDLAANDILDYKDDDDKV

Purity	> 80% as determined by SDS-PAGE and Coomassie blue staining.
Stability	Stable for 12 months from the date of receipt of the product under proper storage and handling conditions. Avoid repeated freeze-thaw cycles.
Storage	Store at -80 centigrade.
Concentration	>50 ug/mL as determined by microplate BCA method.
Preparation	Recombinant protein was captured through anti-DDK affinity column followed by conventional chromatography steps.
Protein Families	Druggable Genome, Protease
Full Length	Full L.

GENE INFORMATION

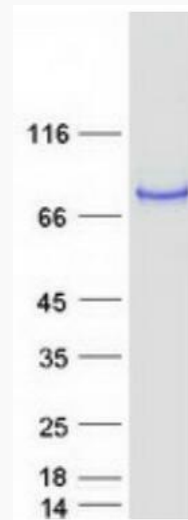
Gene Name	CAPN13 calpain 13 [Homo sapiens (human)]
Official Symbol	CAPN13
Synonyms	FLJ23523

 Tel: 1-631-559-9269 1-516-512-3133

 Email: info@creative-biomart.com  Fax: 1-631-938-8127

 45-1 Ramsey Road, Shirley, NY 11967, USA

Gene ID	92291
mRNA Refseq	NM_144575.3
Protein Refseq	NP_653176.2
MIM	610228
UniProt ID	Q6MZZ7



Coomassie blue staining of purified CAPN13 protein.

Tel: 1-631-559-9269 1-516-512-3133

Email: info@creative-biomart.com Fax: 1-631-938-8127

45-1 Ramsey Road, Shirley, NY 11967, USA