

# Recombinant Full Length Human CAPN2 Protein, C-Flag-tagged

**Cat. No.** CAPN2-115HFL    **Lot. No.** (See product label)

## SPECIFICATION

<b>Product Overview</b>	Recombinant Full Length Human CAPN2 Protein, fused to Flag-tag at C-terminus, was expressed in Mammalian cells.
<b>Species</b>	Human
<b>Source</b>	Mammalian Cells
<b>Description</b>	<p>The calpains, calcium-activated neutral proteases, are nonlysosomal, intracellular cysteine proteases. The mammalian calpains include ubiquitous, stomach-specific, and muscle-specific proteins. The ubiquitous enzymes consist of heterodimers with distinct large, catalytic subunits associated with a common small, regulatory subunit. This gene encodes the large subunit of the ubiquitous enzyme, calpain 2. Multiple heterogeneous transcriptional start sites in the 5' UTR have been reported. Two transcript variants encoding different isoforms have been found for this gene.</p>
<b>Form</b>	25 mM Tris HCl, pH 7.3, 100 mM glycine, 10% glycerol.
<b>Molecular Mass</b>	79.8 kDa
<b>AA Sequence</b>	<p>MAGIAAKLAKDREAAEGLGSHERAIKYLNQDYEARNECLEAGTLFQDPSFPAIPSAL            GFKELGPYSSKT RGIEWKRPTICADPQFIIGGATRTRDQCQALGDCWLLAAIASLTL            NEEILARVVPLNQSFQENYAGIFH FQFWQYGEWVEVVDDRLPTKDGELLFVHSAE            GSEFWSALLEKAYAKINGCYEALSGGATTEGFEDFTGG IAEWYELKKPPPNLFKIIQ            KALQKGSLLGCSIDITSAADSEAITFQKLVKGHAYSVTGAEEVESNGSLQK LIRIRNP</p>

 Tel: 1-631-559-9269    1-516-512-3133

 Email: [info@creative-biomart.com](mailto:info@creative-biomart.com)     Fax: 1-631-938-8127

 45-1 Ramsey Road, Shirley, NY 11967, USA

WGEVEWTGRWNDNCPSWNTIDPEERERLTRRHEDGEFWMSFSDFLRHYSRLEIC  
 NLTPDTLTS DTYKKWKLTKMDGNWRRGSTAGGCRNYPNTFWMNPQYLIKLEEEDE  
 DEEDGESGCTFLVGLIQKHRRRQR KMGEDMHTIGFGIYEVPEELSGQTNIHLSKNF  
 FLTNRARERSDTFINLREVLNRFKLPPGEYILVPSTFE PNKDGDFCIRVFSEKKADYQ  
 AVDDEIEANLEEFDISEDIDDDGFRRLFAQLAGEDAEISAFELQILRRV LAKRQDIKS  
 DGFSIETCKIMVDMLDSDGSGKLGLKEFYILWTKIQKYQKIYREIDVDRSGTMNSYEM  
 RKA LEEAGFKMPCQLHQVIVARFADDQLIIDFDNFVRCLVRLETFLKIFKQLDPENTG  
 TIELDLISWLCFSVLSGPTRTRPPELQKLISEEDLAANDILDYKDDDDKV

<b>Purity</b>	> 80% as determined by SDS-PAGE and Coomassie blue staining.
<b>Stability</b>	Stable for 12 months from the date of receipt of the product under proper storage and handling conditions. Avoid repeated freeze-thaw cycles.
<b>Storage</b>	Store at -80 centigrade.
<b>Concentration</b>	>50 ug/mL as determined by microplate BCA method.
<b>Preparation</b>	Recombinant protein was captured through anti-DDK affinity column followed by conventional chromatography steps.
<b>Protein Families</b>	Druggable Genome, Protease
<b>Protein Pathways</b>	Alzheimer's disease, Apoptosis, Focal adhesion
<b>Full Length</b>	Full L.

## GENE INFORMATION

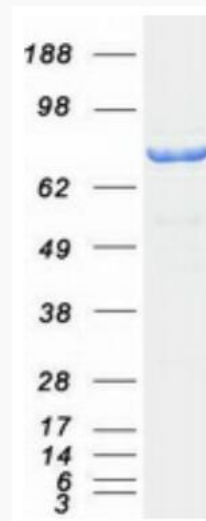
**Gene Name** [CAPN2 calpain 2 \[ Homo sapiens \(human\) \]](#)

 Tel: 1-631-559-9269 1-516-512-3133

 Email: [info@creative-biomart.com](mailto:info@creative-biomart.com)  Fax: 1-631-938-8127

 45-1 Ramsey Road, Shirley, NY 11967, USA

<b>Official Symbol</b>	CAPN2
<b>Synonyms</b>	CANP2; mCANP; CANPL2; CANPml
<b>Gene ID</b>	824
<b>mRNA Refseq</b>	NM_001748.5
<b>Protein Refseq</b>	NP_001739.3
<b>MIM</b>	114230
<b>UniProt ID</b>	P17655



Coomassie blue staining of purified CAPN2 protein.

 Tel: 1-631-559-9269 1-516-512-3133

 Email: [info@creative-biomart.com](mailto:info@creative-biomart.com)  Fax: 1-631-938-8127

 45-1 Ramsey Road, Shirley, NY 11967, USA