

Recombinant Human CAPN2 Protein, Myc/DDK-tagged, C13 and N15-labeled

Cat. No. CAPN2-3550H Lot. No. (See product label)

SPECIFICATION

Product Overview	CAPN2 MS Standard C13 and N15-labeled recombinant protein (NP_001739) with a C-terminal MYC/DDK tag, was expressed in HEK293 cells.
Species	Human
Source	HEK293
Description	<p>The calpains, calcium-activated neutral proteases, are nonlysosomal, intracellular cysteine proteases. The mammalian calpains include ubiquitous, stomach-specific, and muscle-specific proteins. The ubiquitous enzymes consist of heterodimers with distinct large, catalytic subunits associated with a common small, regulatory subunit. This gene encodes the large subunit of the ubiquitous enzyme, calpain 2. Multiple heterogeneous transcriptional start sites in the 5' UTR have been reported. Two transcript variants encoding different isoforms have been found for this gene.</p>
Molecular Mass	80 kDa
AA Sequence	<p>MAGIAAKLAKDREAAEGLGSHERAIKYLNQDYEARNECLEAGTLFQDPSFPAIP SALGFKELGPYSSKTRGIEWKRPTEICADPQFIIGGATRTRDQCQALGDCWLLAAIASLTL NEEILARVVPLNQSFAQENYAGIFHFQFWQYGEWVEVVDDRLPTKDGELLFVHSAE GSEFWSALLEKAYAKINGCYEALSGGATTEGFEDFTGGIAEWYELKKPPPNLFKIIQK ALQKGSLLGCSIDITSAADSEAITFQKLVKGHAYSVTGAEVEVESNGSLQKLIRINPW GEVEWTGRWVNDNCPWNTIDPEERERLRRRHEDGEFWMSFSDFLRHYSRLEICNL</p>

 Tel: 1-631-559-9269 1-516-512-3133

 Email: info@creative-biomart.com  Fax: 1-631-938-8127

 45-1 Ramsey Road, Shirley, NY 11967, USA

TPDTLTSDTYKKWKLTKMDGNWRRGSTAGGCRNYPNTFWMNPQYLIKLEEEDEDE
 EDGESGCTFLVGLIQKHRRRQRKMGEDMHTIGFGIYEVPEELSGQTNIHLSKNFFLT
 NRARERSDTFINLREVLNRFKLPPGEYILVPSTFEPNKDGDGFCIRVFSEKKADYQAVD
 DEIEANLEEFDISEDIDDGFRRLFAQLAGEDAEISAFELQILRRVLAKRQDIKSDGF
 SIETCKIMVDMLDSDGSGKLGLKEFYILWTKIQKYQKIYREIDVDRSGTMNSYEMRKA
 LEEAGFKMPCQLHQVIVARFADDQLIIDFDNFVRCLVRLETFLFKIFKQLDPENTGTIEL
 DLISWLCFVLSGPTRTRPLEQKLISEEDLAANDILDYKDDDDKV

Purity > 80% as determined by SDS-PAGE and Coomassie blue staining

Stability Stable for 3 months from receipt of products under proper storage and handling conditions.

Storage Store at -80 centigrade. Avoid repeated freeze-thaw cycles.

Concentration 50 µg/mL as determined by BCA

Storage Buffer 100 mM glycine, 25 mM Tris-HCl, pH 7.3.

GENE INFORMATION

Gene Name CAPN2 calpain 2 [Homo sapiens (human)]

Official Symbol CAPN2

Synonyms CAPN2; calpain 2, (m/II) large subunit; calpain-2 catalytic subunit; CANPL2; CANPml; mCANP; CANP 2; M-calpain; calpain M-type; millimolar-calpain; calpain-2 large subunit; calpain 2, large subunit; calpain large polypeptide L2; calpain, large polypeptide L2; calpain 2, large [catalytic] subunit; calcium-activated neutral proteinase 2; CANP2; FLJ39928;

 Tel: 1-631-559-9269 1-516-512-3133

 Email: info@creative-biomart.com  Fax: 1-631-938-8127

 45-1 Ramsey Road, Shirley, NY 11967, USA

Gene ID 824

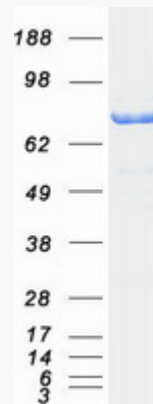
mRNA Refseq NM_001748

Protein Refseq NP_001739

MIM 114230

UniProt ID P17655

SDS-PAGE



 Tel: 1-631-559-9269 1-516-512-3133

 Email: info@creative-biomart.com  Fax: 1-631-938-8127

 45-1 Ramsey Road, Shirley, NY 11967, USA