

Recombinant Human CAPN3 Protein, GST-tagged

Cat. No. CAPN3-27209TH Lot. No. (See product label)

SPECIFICATION

Product Overview	Recombinant Human CAPN3(1 a.a. - 309 a.a.) fused with GST tag at N-terminal was expressed in Wheat Germ.
Species	Human
Source	Wheat Germ
ProteinLength	1-309 a.a.
Description	Calpain, a heterodimer consisting of a large and a small subunit, is a major intracellular protease, although its function has not been well established. This gene encodes a muscle-specific member of the calpain large subunit family that specifically binds to titin. Mutations in this gene are associated with limb-girdle muscular dystrophies type 2A. Alternate promoters and alternative splicing result in multiple transcript variants encoding different isoforms and some variants are ubiquitously expressed.
Form	50 mM Tris-HCl, 10 mM reduced Glutathione, pH=8.0 in the elution buffer.
Molecular Mass	59.62 kDa
AA Sequence	MHGKQHLQKDFFLYNASKARSKTYINMREVSQRFRFPSEYVIVPSTYEPHQEGE FILRVFSEKRNLSEEVENTISVDRPVKKKTKPIIFVSDRANSNKELGVDQESEEGKG KTSPDKQKQSPQPQPGSSDQESEEQQQFRNIFKQIAGDDMEICADELKKVLNTVVN KHKDLKTHGFTLESCRSMIALMDTDGSGKLNQLQEFHHLWNKIKAWQKIFKHYDTDQ

 Tel: 1-631-559-9269 1-516-512-3133

 Email: info@creative-biomart.com  Fax: 1-631-938-8127

 45-1 Ramsey Road, Shirley, NY 11967, USA

SGTINSYEMRNAVNDAGFHLNNQLYDIITMRYADKHMNIDFDSFICCFVRLEGMFRA
FHAFDKDGDGIIKLVLEWLQLTMYA

Applications

Enzyme-linked Immunoabsorbent; Assay Western Blot (Recombinant protein);
Antibody Production; Protein Array

Notes

Best use within three months from the date of receipt of this protein.

Storage

Store at -80 centigrade. Aliquot to avoid repeated freezing and thawing.

GENE INFORMATION

Gene Name

CAPN3 calpain 3, (p94) [Homo sapiens]

Official Symbol

CAPN3

Synonyms

CAPN3; calpain 3, (p94); LGMD2, LGMD2A; calpain-3; CANP3; nCL 1; p94; calpain L3; new calpain 1; calpain, large polypeptide L3; calcium-activated neutral proteinase 3; calpain p94, large [catalytic] subunit; muscle-specific calcium-activated neutral protease 3 large subunit; LGMD2; nCL-1; CANPL3; LGMD2A; MGC4403; MGC10767; MGC11121; MGC14344;

Gene ID

825

mRNA Refseq

NM_000070

Protein Refseq

NP_000061

MIM

114240

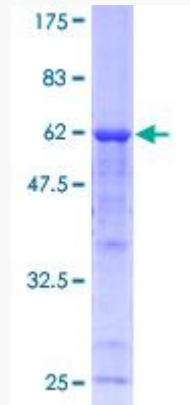
UniProt ID

P20807

 Tel: 1-631-559-9269 1-516-512-3133

 Email: info@creative-biomart.com  Fax: 1-631-938-8127

 45-1 Ramsey Road, Shirley, NY 11967, USA



 Tel: 1-631-559-9269 1-516-512-3133

 Email: info@creative-biomart.com  Fax: 1-631-938-8127

 45-1 Ramsey Road, Shirley, NY 11967, USA