

Recombinant Full Length Human CAPN3 Protein, N-His-tagged

Cat. No. CAPN3-36HFL **Lot. No.** (See product label)

SPECIFICATION

Product Overview	Recombinant Full Length Protein of Human CAPN3, transcript variant 5, fused to His-tag at N-terminus, was expressed in E. coli.
Species	Human
Source	E.coli
Description	Calpain, a heterodimer consisting of a large and a small subunit, is a major intracellular protease, although its function has not been well established. This gene encodes a muscle-specific member of the calpain large subunit family that specifically binds to titin. Mutations in this gene are associated with limb-girdle muscular dystrophies type 2A. Alternate promoters and alternative splicing result in multiple transcript variants encoding different isoforms and some variants are ubiquitously expressed.
Form	50mM Tris, pH8.0, 8M Urea.
Molecular Mass	18.1 kDa
AA Sequence	A DNA sequence encoding the region full length of CAPN3.
Purity	> 80% as determined by SDS-PAGE and Coomassie blue staining.
Stability	Stable for 12 months from the date of receipt of the product under proper storage and handling conditions. Avoid repeated freeze-thaw cycles.

 Tel: 1-631-559-9269 1-516-512-3133

 Email: info@creative-biomart.com  Fax: 1-631-938-8127

 45-1 Ramsey Road, Shirley, NY 11967, USA

Storage	Store at -80 centigrade after receiving vials.
Concentration	>50 µg/µ as determined by microplate BCA method.
Protein Families	Druggable Genome, Protease
Full Length	Full L.

GENE INFORMATION

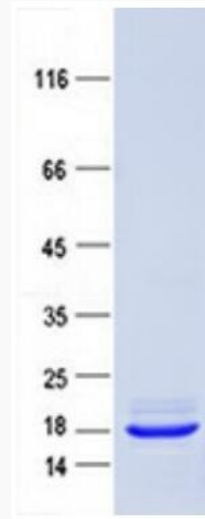
Gene Name	CAPN3 calpain 3 [Homo sapiens (human)]
Official Symbol	CAPN3
Synonyms	p94; CANP3; LGMD2; nCL-1; CANPL3; LGMD2A; LGMDD4; LGMDR1
Gene ID	825
mRNA Refseq	NM_173089.2
Protein Refseq	NP_775112.1
MIM	114240
UniProt ID	P20807

 Tel: 1-631-559-9269 1-516-512-3133

 Email: info@creative-biomart.com  Fax: 1-631-938-8127

 45-1 Ramsey Road, Shirley, NY 11967, USA

SDS-PAGE



Coomassie blue staining of purified CAPN3 protein.

 Tel: 1-631-559-9269 1-516-512-3133

 Email: info@creative-biomart.com  Fax: 1-631-938-8127

 45-1 Ramsey Road, Shirley, NY 11967, USA