

Recombinant Rat CAPRIN1 Protein (2-707 aa), His-SUMO-tagged

Cat. No. CAPRIN1-1029R **Lot. No.** (See product label)

SPECIFICATION

Product Overview	Recombinant Rat CAPRIN1 Protein (2-707 aa) is produced by E. coli expression system. This protein is fused with a 6xHis-SUMO tag at the N-terminal. Protein Description: Full Length of Mature Protein.
Species	Rat
Source	E.coli
ProteinLength	2-707 aa
Description	May regulate the transport and translation of mRNAs of proteins involved in synaptic plasticity in neurons and cell proliferation and migration in multiple cell types.
Form	Tris-based buffer, 50% glycerol
Molecular Mass	94.0 kDa
AA Sequence	<p>PSATSHSGSGSKSSGPPPPSGSSGSEAAAGAAAPASQHPATGTGAVQTEAMKQIL GVIDKKLRNLEKKKGKLDYQERMNKGRLNQQQLDAVSKYQEVTTNLEFAKELQR SFMALSQDIQKTIKKTARREQLMREEAEQRLKTVLELQYVLDKLGDDDVRTDLKQG LSGVPIlseEELsLLDEFYKLVDPERDMSLRLNEQYEHASIHlWDLLEGKEKpVCGTT YKALKEIVERVFQSNYFDSTHnHQnglCEEEEEaASAPIVEDQVAEAPEPETEEYTEQ SEVESTeYVnRQfMAETQfSSgEKeQVDEWAVETVEVnSLQqQPQAASpSVPEP HSLTPVAQSDPLVRRQRVQDLMAQMGGPYnFIQDSMLDFENQTLDPaIVSAQPMN</p>

 Tel: 1-631-559-9269 1-516-512-3133

 Email: info@creative-biomart.com  Fax: 1-631-938-8127

 45-1 Ramsey Road, Shirley, NY 11967, USA

PTQNMDMPQLVCPQVHSESRLAQSNQVPVQPEATQVPLVSSTSEGYTASQPLYQP
 SHAAEQRPQKEPIDQIQATISLNTEQTTASSSLPAASQPQVFQAGASKPLHSSGINVN
 AAPFQSMQTVFNMNAPVPPVNEPETLKQQSQYQASYNQSFSSQPHQVEQTELQQ
 DQLQTVVGTYHGSQDQPHQVPGNHQQPPQQSTGFPRSSQPYNSRGLVSRGGSR
 GARGLMNGYRGPANGFRGGYDGYRSSFNTPNSTSGYTQSQFNAPRDYSGYQRDG
 YQQNFKRGSQSGPRGAPRGRGGPPRPNRGMPQMNTQQVN

Purity	> 90% as determined by SDS-PAGE.
Notes	Repeated freezing and thawing is not recommended. Store working aliquots at 4 centigrade for up to one week.
Storage	The shelf life is related to many factors, storage state, buffer ingredients, storage temperature and the stability of the protein itself. Generally, the shelf life of liquid form is 6 months at -20 centigrade/-80 centigrade. The shelf life of lyophilized form is 12 months at -20 centigrade/-80 centigrade.
Concentration	A hardcopy of COA with concentration instruction is sent along with the products.

GENE INFORMATION

Gene Name	Caprin1 cell cycle associated protein 1 [<i>Rattus norvegicus</i>]
Official Symbol	CAPRIN1
Synonyms	CAPRIN1; caprin-1; p137GPI; GPI-p137; Gpiap1; rng105; GPI p137; MGC124904; MGC125054;
Gene ID	362173
mRNA Refseq	NM_001012185

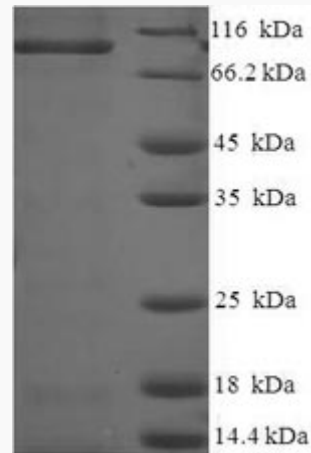
 Tel: 1-631-559-9269 1-516-512-3133

 Email: info@creative-biomart.com  Fax: 1-631-938-8127

 45-1 Ramsey Road, Shirley, NY 11967, USA

Protein Refseq NP_001012185

UniProt ID Q5M9G3



(Tris-Glycine gel) Discontinuous SDS-PAGE (reduced) with 5% enrichment gel and 15% separation gel.

Tel: 1-631-559-9269 1-516-512-3133

Email: info@creative-biomart.com Fax: 1-631-938-8127

45-1 Ramsey Road, Shirley, NY 11967, USA