

# Active Recombinant Full Length Human CAPRIN1 Protein, C-Flag-tagged

**Cat. No.** CAPRIN1-283HFL    **Lot. No.** (See product label)

## SPECIFICATION

<b>Product Overview</b>	Recombinant Full Length Human CAPRIN1 Protein, fused to Flag-tag at C-terminus, was expressed in Mammalian cells.
<b>Species</b>	Human
<b>Source</b>	Mammalian Cells
<b>Description</b>	May regulate the transport and translation of mRNAs of proteins involved in synaptic plasticity in neurons and cell proliferation and migration in multiple cell types. Binds directly and selectively to MYC and CCND2 RNAs. In neuronal cells, directly binds to several mRNAs associated with RNA granules, including BDNF, CAMK2A, CREB1, MAP2, NTRK2 mRNAs, as well as to GRIN1 and KPNB1 mRNAs, but not to rRNAs.
<b>Form</b>	25 mM Tris HCl, pH 7.3, 100 mM glycine, 10% glycerol.
<b>Bio-activity</b>	Co-immunoprecipitation
<b>Molecular Mass</b>	78.2 kDa
<b>AA Sequence</b>	MPSATSHSGSGSKSSGPPPPSGSSGSEAAAGAGAAAPASQHPATGTGAVQTEAM KQILGVIDKCLRNLK KKGKLDYQERMNKGERLNQDQLDAVSKYQEVNLEFAK ELQRSFMALSQDIQKTIKKTARREQLMREE AEQRLKTVLELQYVLDKLGDDDEVRT DLKQGLNGVPILSEEELSLLEDEFYKLVDPERDMSLRLNEQYEHA SIHLWDLLEGKEK PVCGTTYKVLKEIVERVFQSNYFDSTHNLHQNGLCEEEEEASAPAVEDQVPEAEPEP

 Tel: 1-631-559-9269    1-516-512-3133

 Email: [info@creative-biomart.com](mailto:info@creative-biomart.com)     Fax: 1-631-938-8127

 45-1 Ramsey Road, Shirley, NY 11967, USA

A EEYTEQSEVEST EYVNRQFMAETQFTS GEKEQVDEWTVETVEVVNSLQQQPQA  
 ASPSVPEPHSLTPVAQA DPLVRRQRVQDLMAQMGGPYNFIQDSMLDFENQTLDP  
 IVSAQPMNPTQNMDMPQLVCPVHSESRLAQP NQVPVQPEATQVPLVSSTSEGYT  
 ASQPLYQPSHATEQR PQKEPIDQIQATISLNTDQTTASSSLPAASQP QVFQAGTSKP  
 LHSSGINVNAAPFQSMQTVFNMNAPVPPVNEPETLKQQNQYQASYNQSFSSQPHQ  
 VEQTE LQQEQLQTVVGT YHGSPDQSHQVTGNHQPPQNTGFPRSNQPYNSR  
 GVSRRGSRGARGLMNGYRGPAN GFRGGYDGYRPSFSNTPNSGYTQSQFSAPRD  
 YSGYQRDGYQQNFKRGSQSGPRGAPRGRGGPPRPNRGM  
 PQMNTQQVNTRTRPLEQKLISEEDLAANDILDYKDDDDKV

**Purity** > 80% as determined by SDS-PAGE and Coomassie blue staining.

**Stability** Stable for 12 months from the date of receipt of the product under proper storage and handling conditions. Avoid repeated freeze-thaw cycles.

**Storage** Store at -80 centigrade.

**Concentration** >50 ug/mL as determined by microplate BCA method.

**Preparation** Recombinant protein was captured through anti-DDK affinity column followed by conventional chromatography steps.

**Full Length** Full L.

## GENE INFORMATION

**Gene Name** CAPRIN1 cell cycle associated protein 1 [ Homo sapiens (human) ]

**Official Symbol** CAPRIN1

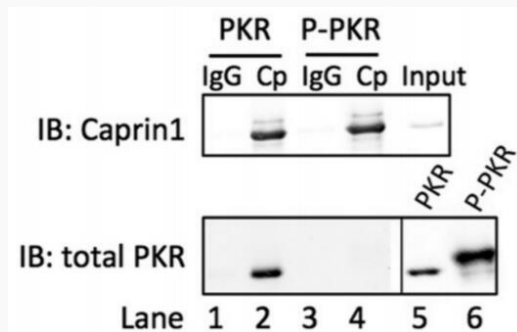
**Synonyms** M11S1; GPIAP1; RNG105; GPIP137; GRIP137; p137GPI

 Tel: 1-631-559-9269 1-516-512-3133

 Email: [info@creative-biomart.com](mailto:info@creative-biomart.com)  Fax: 1-631-938-8127

 45-1 Ramsey Road, Shirley, NY 11967, USA

<b>Gene ID</b>	4076
<b>mRNA Refseq</b>	NM_005898.5
<b>Protein Refseq</b>	NP_005889.3
<b>MIM</b>	601178
<b>UniProt ID</b>	Q14444

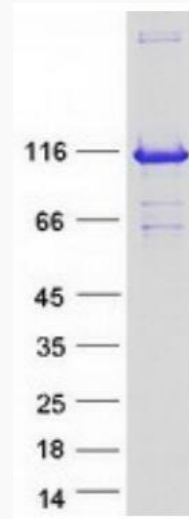


Caprin1 interacts with inactive PKR. Purified Caprin1 was incubated with inactive PKR (PKR) or active PKR (P-PKR), immunoprecipitated with either nonspecific IgG or caprin1 antibodies, and analyzed by Western blotting for caprin1 or total PKR with corresponding antibodies.

Tel: 1-631-559-9269 1-516-512-3133

Email: [info@creative-biomart.com](mailto:info@creative-biomart.com) Fax: 1-631-938-8127

45-1 Ramsey Road, Shirley, NY 11967, USA



Coomassie blue staining of purified CAPRIN1 protein.

 Tel: 1-631-559-9269 1-516-512-3133

 Email: [info@creative-biomart.com](mailto:info@creative-biomart.com)  Fax: 1-631-938-8127

 45-1 Ramsey Road, Shirley, NY 11967, USA