

Recombinant Human CAPS Protein, GST-Tagged

Cat. No. CAPS-0377H Lot. No. (See product label)

SPECIFICATION

Product Overview	Human CAPS full-length ORF (NP_004049.1, 1 a.a. - 189 a.a.) recombinant protein with GST-tag at N-terminal.
Species	Human
Source	Wheat Germ
Description	This gene encodes a calcium-binding protein, which may play a role in the regulation of ion transport. A similar protein was first described as a potentially important regulatory protein in the dog thyroid and was termed as R2D5 antigen in rabbit. Alternative splicing of this gene generates two transcript variants. [provided by RefSeq, Jul 2008]
Molecular Mass	47.4 kDa
AA Sequence	MDAVDATMEKLRAQCLSRGASGIQGLARFFRQLDRDGSRSRLDADEFRQGLAKLGL VLDQAEAEAGVCRKWDRNGSGTLDLLEEFRLRALRPPMSQAREAVIAAAFAKLDRSGD GVVTVDLDRGVYSGRAHPKVRSGEWTEDEVLRFLDNFDSSEKDGQVTLAEFQDY YSGVSASMNTDEEFVAMMTSAWQL
Applications	Enzyme-linked Immunoabsorbent Assay Western Blot (Recombinant protein) Antibody Production Protein Array

 Tel: 1-631-559-9269 1-516-512-3133

 Email: info@creative-biomart.com  Fax: 1-631-938-8127

 45-1 Ramsey Road, Shirley, NY 11967, USA

Storage Store at -80 centigrade. Aliquot to avoid repeated freezing and thawing.

Storage Buffer 50 mM Tris-HCl, 10 mM reduced Glutathione, pH=8.0 in the elution buffer.

GENE INFORMATION

Gene Name CAPS calcyphosine [Homo sapiens]

Official Symbol CAPS

Synonyms CAPS; calcyphosine; calcyphosin; calcyphosine 1; CAPS1; MGC126562; thyroid protein p24;

Gene ID 828

mRNA Refseq NM_004058

Protein Refseq NP_004049

MIM 114212

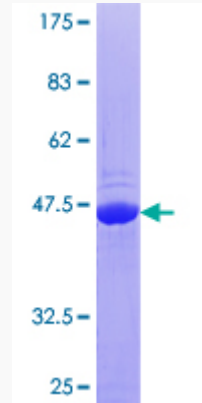
UniProt ID Q13938

 Tel: 1-631-559-9269 1-516-512-3133

 Email: info@creative-biomart.com  Fax: 1-631-938-8127

 45-1 Ramsey Road, Shirley, NY 11967, USA

**Quality Control
Testing**



12.5% SDS-PAGE Stained with Coomassie Blue.

 Tel: 1-631-559-9269 1-516-512-3133

 Email: info@creative-biomart.com  Fax: 1-631-938-8127

 45-1 Ramsey Road, Shirley, NY 11967, USA