

Recombinant Human CAPS2 Protein, GST-Tagged

Cat. No. CAPS2-0379H Lot. No. (See product label)

SPECIFICATION

Product Overview	Human CAPS2 full-length ORF (AAH56672.1, 1 a.a. - 293 a.a.) recombinant protein with GST-tag at N-terminal.
Species	Human
Source	Wheat Germ
Description	Calcyphosine-2 is a calcium-binding protein with 2 EF-hand motifs (Wang et al., 2002 [PubMed 11846421]).[supplied by OMIM, Mar 2008]
Molecular Mass	60.1 kDa
AA Sequence	MIDHLSRAVISDPEQNLAIEQKESDHILPDSKMTPLRFRKRTLHETKIRTHSTLTENVL SHKLQFDGRIVSRITNVLVPIQKSIYSHQCGRKRGKQYRLGDFYVGATLTFLSSDHLS LPESIKENTLLKLRITNIDQIALDSLKTASMEQEDDIIIQETNDRLVFKAIQDVLKEKLHK RGVRILTGLGKYFQQLDKEGNLLDKADFKQALKVFHLEVSEKDFESAWLILNDNGN GKVDYGEFKRGIIGEMNEYRKSIVRKAFMKLDFNKSGSVPIINIRKCYCAKKHSQVIS G
Applications	Enzyme-linked Immunoabsorbent Assay Western Blot (Recombinant protein) Antibody Production Protein Array
Storage	Store at -80 centigrade. Aliquot to avoid repeated freezing and thawing.

 Tel: 1-631-559-9269 1-516-512-3133

 Email: info@creative-biomart.com  Fax: 1-631-938-8127

 45-1 Ramsey Road, Shirley, NY 11967, USA

Storage Buffer 50 mM Tris-HCl, 10 mM reduced Glutathione, pH=8.0 in the elution buffer.

GENE INFORMATION

Gene Name CAPS2 calcyphosine 2 [Homo sapiens]

Official Symbol CAPS2

Synonyms CAPS2; calcyphosine 2; calcyphosphine 2; calcyphosin-2; calcyphosine-2; UG0636c06; FLJ34520;

Gene ID 84698

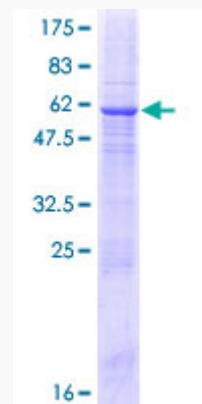
mRNA Refseq NM_032606

Protein Refseq NP_115995

MIM 607724

UniProt ID Q9BXY5

Quality Control Testing



 Tel: 1-631-559-9269 1-516-512-3133

 Email: info@creative-biomart.com  Fax: 1-631-938-8127

 45-1 Ramsey Road, Shirley, NY 11967, USA



12.5% SDS-PAGE Stained with Coomassie Blue.

 Tel: 1-631-559-9269 1-516-512-3133

 Email: info@creative-biomart.com  Fax: 1-631-938-8127

 45-1 Ramsey Road, Shirley, NY 11967, USA