

Recombinant Full Length Human CAPZA1 Protein, C-Flag-tagged

Cat. No. CAPZA1-1381HFL **Lot. No.** (See product label)

SPECIFICATION

Product Overview	Recombinant Full Length Human CAPZA1 Protein, fused to Flag-tag at C-terminus, was expressed in Mammalian cells.
Species	Human
Source	Mammalian Cells
Description	CAPZA1 is a member of the F-actin capping protein alpha subunit family. This gene encodes the alpha subunit of the barbed-end actin binding protein. The protein regulates growth of the actin filament by capping the barbed end of growing actin filaments.
Form	25 mM Tris HCl, pH 7.3, 100 mM glycine, 10% glycerol.
Molecular Mass	32.7 kDa
AA Sequence	MADFDDRVSDEEKVRIAAKFITHAPPGEFNEVFNDVRLLLNNDNLLREGAAHAFAQY NMDQFTPVKIEGY EDQVLITEHGDLGNSRFLDPRNKISFKFDHLRKEASDPQPEEAD GGLKSWRESCDSALRAYVKDHYSNGF CTVYAKTIDGQQTIIACIESHQFQPKNFWN GRWRSEWKFTITPPTAQVVGVLKIQVHYEDGNVQLVSHK DVQDSLTVSNEAQTA KEFIKIIENAENEYQTAISENYQTMSDITTFKALRRQLPVTRTKIDWNKILSYKIG KEMQNATRTRPLEQKLISEEDLAANDILDYKDDDDKV
Purity	> 80% as determined by SDS-PAGE and Coomassie blue staining.

 Tel: 1-631-559-9269 1-516-512-3133

 Email: info@creative-biomart.com  Fax: 1-631-938-8127

 45-1 Ramsey Road, Shirley, NY 11967, USA

Stability	Stable for 12 months from the date of receipt of the product under proper storage and handling conditions. Avoid repeated freeze-thaw cycles.
Storage	Store at -80 centigrade.
Concentration	>50 ug/mL as determined by microplate BCA method.
Preparation	Recombinant protein was captured through anti-DDK affinity column followed by conventional chromatography steps.
Full Length	Full L.

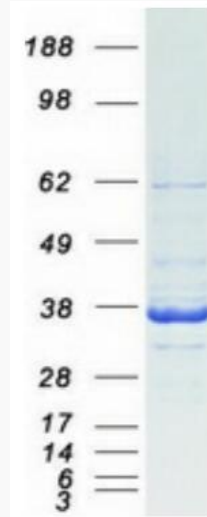
GENE INFORMATION

Gene Name	CAPZA1 capping actin protein of muscle Z-line subunit alpha 1 [Homo sapiens (human)]
Official Symbol	CAPZA1
Synonyms	CAPZ; CAZ1; CAPPA1
Gene ID	829
mRNA Refseq	NM_006135.3
Protein Refseq	NP_006126.1
MIM	601580
UniProt ID	P52907

 Tel: 1-631-559-9269 1-516-512-3133

 Email: info@creative-biomart.com  Fax: 1-631-938-8127

 45-1 Ramsey Road, Shirley, NY 11967, USA



Coomassie blue staining of purified CAPZA1 protein.

 Tel: 1-631-559-9269 1-516-512-3133

 Email: info@creative-biomart.com  Fax: 1-631-938-8127

 45-1 Ramsey Road, Shirley, NY 11967, USA