

Recombinant Human CAPZA2 Protein, GST-Tagged

Cat. No. CAPZA2-0384H Lot. No. (See product label)

SPECIFICATION

Product Overview Human CAPZA2 full-length ORF (AAH05338.1, 1 a.a. - 286 a.a.) recombinant protein with GST-tag at N-terminal.

Species Human

Source Wheat Germ

Description The protein encoded by this gene is a member of the F-actin capping protein alpha subunit family. It is the alpha subunit of the barbed-end actin binding protein Cap Z. By capping the barbed end of actin filaments, Cap Z regulates the growth of the actin filaments at the barbed end. [provided by RefSeq, Jul 2008]

Molecular Mass 57.09 kDa

AA Sequence MADLEEQLSDEEKVRIAAKFIIHAPPGEFNEVFNDVRLLLNNDNLLREGAAHAFAQYN
LDQFTPVKIEGYEDQVLITEHGDLGNGKFLDPKNRICFKFDHLRKEATDPRPCEVEN
AVESWRTSVETALRAYVKEHYPNGVCTVYGKKIDGQQTIIACIESHQFQAKNFWNG
RWRSEWKFTITPSTTQVVGILKIQVHYEDGNVQLVSHKDIQDSLTVSNEVQTAKEFI
KIVEAAENEYQTAISENYQTMSDTTFKALRRQLPVTRTKIDWNKILSYKIGKEMQNA

Applications Enzyme-linked Immunoabsorbent Assay
Western Blot (Recombinant protein)
Antibody Production
Protein Array

 Tel: 1-631-559-9269 1-516-512-3133

 Email: info@creative-biomart.com  Fax: 1-631-938-8127

 45-1 Ramsey Road, Shirley, NY 11967, USA

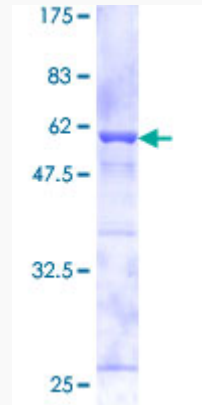
Storage	Store at -80 centigrade. Aliquot to avoid repeated freezing and thawing.
Storage Buffer	50 mM Tris-HCl, 10 mM reduced Glutathione, pH=8.0 in the elution buffer.
GENE INFORMATION	
Gene Name	CAPZA2 capping protein (actin filament) muscle Z-line, alpha 2 [Homo sapiens]
Official Symbol	CAPZA2
Synonyms	CAPZA2; capping protein (actin filament) muscle Z-line, alpha 2; F-actin-capping protein subunit alpha-2; CAPPAA2; CAPZ; F actin capping protein alpha 2 subunit; capZ alpha-2; F-actin capping protein alpha-2 subunit;
Gene ID	830
mRNA Refseq	NM_006136
Protein Refseq	NP_006127
MIM	601571
UniProt ID	P47755

 Tel: 1-631-559-9269 1-516-512-3133

 Email: info@creative-biomart.com  Fax: 1-631-938-8127

 45-1 Ramsey Road, Shirley, NY 11967, USA

**Quality Control
Testing**



12.5% SDS-PAGE Stained with Coomassie Blue.

 Tel: 1-631-559-9269 1-516-512-3133

 Email: info@creative-biomart.com  Fax: 1-631-938-8127

 45-1 Ramsey Road, Shirley, NY 11967, USA