

Recombinant Human CAPZA3 Protein, GST-Tagged

Cat. No. CAPZA3-0386H **Lot. No.** (See product label)

SPECIFICATION

Product Overview	Human CAPZA3 full-length ORF (AAH16745.1, 1 a.a. - 299 a.a.) recombinant protein with GST-tag at N-terminal.
Species	Human
Source	Wheat Germ
Description	This gene encodes an actin capping protein, one of the F-actin capping protein alpha subunit family. The encoded protein is predominantly localized to the neck region of ejaculated sperm, other immunohistochemical signals were found in the tail and postacrosomal regions. The encoded protein may also form heterodimers of alpha and beta subunits. This protein may be important in determining sperm architecture and male fertility. [provided by RefSeq, Jul 2008]
Molecular Mass	61.5 kDa
AA Sequence	MTLSVLSRKDKERVIRLLLLQAPPGEFVNAFDDLCLLIRDEKLMHHQGECAGHQHC QKYSVPLCIDGNPVLLSHHNVMGDYRFFDHQSKLSFKYLLQNQLKDIQSHGIIQNE AEYLRVLLCALKLYVNDHYPKGNMRLRKTVKSKEYLIACIEDHNYETGECWNGL WKSKWIFQVNPFLTQVTGRIFVQAHHFFRCVNLHIEISKDLKESLEIVNQAQLALSFARL VEEQENKFQAAVLEELQELSNEALRKILRRDLPVTRTLIDWHRILSDLNLVMYPKLG VIYSRSVLCNWII
Applications	Enzyme-linked Immunoabsorbent Assay Western Blot (Recombinant protein)

 Tel: 1-631-559-9269 1-516-512-3133

 Email: info@creative-biomart.com  Fax: 1-631-938-8127

 45-1 Ramsey Road, Shirley, NY 11967, USA

Antibody Production
Protein Array

Storage Store at -80 centigrade. Aliquot to avoid repeated freezing and thawing.

Storage Buffer 50 mM Tris-HCl, 10 mM reduced Glutathione, pH=8.0 in the elution buffer.

GENE INFORMATION

Gene Name CAPZA3 capping protein (actin filament) muscle Z-line, alpha 3 [Homo sapiens]

Official Symbol CAPZA3

Synonyms CAPZA3; capping protein (actin filament) muscle Z-line, alpha 3; F-actin-capping protein subunit alpha-3; CAPPA3; Gsg3; CP-alpha-3; CapZ alpha-3; germ cell-specific protein 3; F-actin capping protein alpha-3 subunit;

Gene ID 93661

mRNA Refseq NM_033328

Protein Refseq NP_201585

MIM 608722

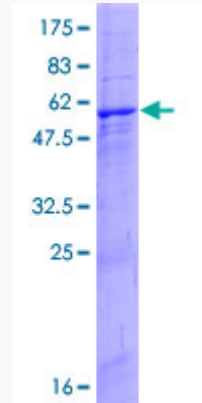
UniProt ID Q96KX2

 Tel: 1-631-559-9269 1-516-512-3133

 Email: info@creative-biomart.com  Fax: 1-631-938-8127

 45-1 Ramsey Road, Shirley, NY 11967, USA

**Quality Control
Testing**



12.5% SDS-PAGE Stained with Coomassie Blue.

 Tel: 1-631-559-9269 1-516-512-3133

 Email: info@creative-biomart.com  Fax: 1-631-938-8127

 45-1 Ramsey Road, Shirley, NY 11967, USA