

## Recombinant Human CARD16 Protein, GST-tagged

**Cat. No.** CARD16-1690H    **Lot. No.** (See product label)

### SPECIFICATION

<b>Product Overview</b>	Human COP1 full-length ORF ( NP_443121.1, 1 a.a. - 97 a.a.) recombinant protein with GST-tag at N-terminal.
<b>Species</b>	Human
<b>Source</b>	Wheat Germ
<b>Description</b>	CARD16 (Caspase Recruitment Domain Family Member 16) is a Protein Coding gene. Among its related pathways are Toll-Like receptor Signaling Pathways. GO annotations related to this gene include cysteine-type endopeptidase inhibitor activity. An important paralog of this gene is CARD17.
<b>Molecular Mass</b>	37.1 kDa
<b>AA Sequence</b>	MADKVLKEKRKLFHSMGEGTINGLLDELLQTRVLNQEEMEKVKRENATVMDKTRAL IDSVIPKGAQACQCICITYICEEDSYLAETLGLSAGPIPGN
<b>Applications</b>	Enzyme-linked Immunoabsorbent Assay Western Blot (Recombinant protein) Antibody Production Protein Array
<b>Notes</b>	Best use within three months from the date of receipt of this protein.
<b>Storage</b>	Store at -80 centigrade. Aliquot to avoid repeated freezing and thawing.

 Tel: 1-631-559-9269    1-516-512-3133

 Email: [info@creative-biomart.com](mailto:info@creative-biomart.com)     Fax: 1-631-938-8127

 45-1 Ramsey Road, Shirley, NY 11967, USA

**Storage Buffer** 50 mM Tris-HCl, 10 mM reduced Glutathione, pH=8.0 in the elution buffer.

## GENE INFORMATION

**Gene Name** [CARD16 caspase recruitment domain family, member 16 \[ Homo sapiens \]](#)

**Official Symbol** [CARD16](#)

**Synonyms** CARD16; caspase recruitment domain family, member 16; caspase recruitment domain-containing protein 16; COP; COP1; PSEUDO ICE; CARD only protein; caspase-1 inhibitor COP; CARD only domain-containing protein 1; pseudo interleukin-1beta converting enzyme; pseudo interleukin-1 beta converting enzyme; caspase-1 dominant-negative inhibitor pseudo-ICE; PSEUDO-ICE;

**Gene ID** [114769](#)

**mRNA Refseq** [NM\\_001017534](#)

**Protein Refseq** [NP\\_001017534](#)

**MIM** [615680](#)

**UniProt ID** [Q5EG05](#)

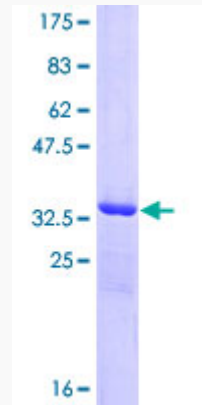
 Tel: 1-631-559-9269 1-516-512-3133

 Email: [info@creative-biomart.com](mailto:info@creative-biomart.com)  Fax: 1-631-938-8127

 45-1 Ramsey Road, Shirley, NY 11967, USA

**Quality Control**

**Testing:**



12.5% SDS-PAGE Stained with Coomassie Blue.

 Tel: 1-631-559-9269 1-516-512-3133

 Email: [info@creative-biomart.com](mailto:info@creative-biomart.com)  Fax: 1-631-938-8127

 45-1 Ramsey Road, Shirley, NY 11967, USA