

Recombinant Human CARD17 protein(1-110aa), His&Myc-tagged

Cat. No. CARD17-2861H **Lot. No.** (See product label)

SPECIFICATION

| | |
|-------------------------|--|
| Product Overview | Recombinant Human CARD17 protein(Q5XLA6)(1-110aa), fused with N-terminal His tag and C-terminal Myc tag, was expressed in E.coli. |
| Species | Human |
| Source | E.coli |
| ProteinLength | 1-110aa |
| Form | If the delivery form is liquid, the default storage buffer is Tris/PBS-based buffer, 5%-50% glycerol. If the delivery form is lyophilized powder, the buffer before lyophilization is Tris/PBS-based buffer, 6% Trehalose, pH 8.0. |
| Molecular Mass | 19.3 kDa |
| Purity | Greater than 90% as determined by SDS-PAGE. |
| Storage | Store at -20°C/-80°C upon receipt, aliquoting is necessary for multiple use. Avoid repeated freeze-thaw cycles. |
| Reconstitution | We recommend that this vial be briefly centrifuged prior to opening to bring the contents to the bottom. Please reconstitute protein in deionized sterile water to a concentration of 0.1-1.0 mg/mL. We recommend to add 5-50% of glycerol (final concentration) and aliquot for long-term storage at -20°C/-80°C. |

 Tel: 1-631-559-9269 1-516-512-3133

 Email: info@creative-biomart.com  Fax: 1-631-938-8127

 45-1 Ramsey Road, Shirley, NY 11967, USA

AA Sequence MADKVLKEKRKQFIRSVGEGTINGLLGELLETRVLSQEEIEIVKCENATVMDKARALL
DSVIRKGPACQCICITYICEEDSHLAGTLGLSAGPTSGNHLLTTQDSQIVLPS

GENE INFORMATION

Gene Name [CARD17 caspase recruitment domain family, member 17 \[Homo sapiens \]](#)

Official Symbol [CARD17](#)

Synonyms CARD17; caspase recruitment domain family, member 17; caspase recruitment domain-containing protein 17; INCA; Inhibitory CARD; caspase-1 inhibitor INCA; inhibitory caspase recruitment domain protein; inhibitory caspase recruitment domain (CARD) protein;

Gene ID [440068](#)

mRNA Refseq [NM_001007232](#)

Protein Refseq [NP_001007233](#)

MIM [609490](#)

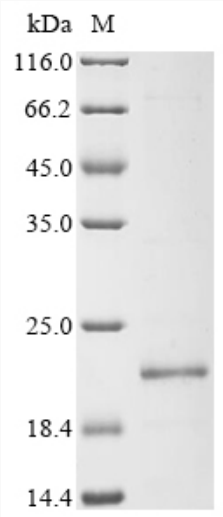
UniProt ID [Q5XLA6](#)

 Tel: 1-631-559-9269 1-516-512-3133

 Email: info@creative-biomart.com  Fax: 1-631-938-8127

 45-1 Ramsey Road, Shirley, NY 11967, USA

SDS-PAGE



 Tel: 1-631-559-9269 1-516-512-3133

 Email: info@creative-biomart.com  Fax: 1-631-938-8127

 45-1 Ramsey Road, Shirley, NY 11967, USA