

Recombinant Human CARD17 protein, His-tagged

Cat. No. CARD17-4479H Lot. No. (See product label)

SPECIFICATION

Product Overview	Recombinant Human CARD17 protein(Q5XLA6)(125aa), fused with N-terminal His tag, was expressed in E. coli.
Species	Human
Source	E.coli
Protein Length	125aa(including fusion tag)
Tag	N-His
Form	20mM Tris.Cl, 50mM NaCl, 50% Glycerol, pH8.0.
Molecular Mass	13.8kDa(including fusion tag)
Storage	Store at -80°C and avoid repeated freeze-thaw cycles.
Reconstitution	It is recommended that sterile water be added to the vial to prepare a stock solution of 0.2 ug/ul. Centrifuge the vial at 4°C before opening to recover the entire contents.

GENE INFORMATION

Gene Name	CARD17 caspase recruitment domain family, member 17 [Homo sapiens]
Official Symbol	CARD17

 Tel: 1-631-559-9269 1-516-512-3133

 Email: info@creative-biomart.com  Fax: 1-631-938-8127

 45-1 Ramsey Road, Shirley, NY 11967, USA

Synonyms CARD17; caspase recruitment domain family, member 17; caspase recruitment domain-containing protein 17; INCA; Inhibitory CARD; caspase-1 inhibitor INCA; inhibitory caspase recruitment domain protein; inhibitory caspase recruitment domain (CARD) protein;

Gene ID 440068

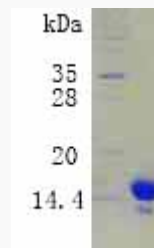
mRNA Refseq NM_001007232

Protein Refseq NP_001007233

MIM 609490

UniProt ID Q5XLA6

SDS-PAGE



 Tel: 1-631-559-9269 1-516-512-3133

 Email: info@creative-biomart.com  Fax: 1-631-938-8127

 45-1 Ramsey Road, Shirley, NY 11967, USA