

Recombinant Human CARD17 Protein, Myc/DDK-tagged, C13 and N15-labeled

Cat. No. CARD17-5485H **Lot. No.** (See product label)

SPECIFICATION

Product Overview	CARD17 MS Standard C13 and N15-labeled recombinant protein (NP_001007233) with a C-terminal MYC/DDK tag, was expressed in HEK293 cells.
Species	Human
Source	HEK293
Description	CARD17 (Caspase Recruitment Domain Family Member 17) is a Protein Coding gene. Among its related pathways are NOD-like receptor signaling pathway. Gene Ontology (GO) annotations related to this gene include cysteine-type endopeptidase inhibitor activity. An important paralog of this gene is CASP1.
Molecular Mass	11.7 kDa
AA Sequence	MADKVLKEKRKQFIRSVGEGTINGLLGELLETRVLSQEEIEIVKCENATVMDKARALL DSVIRKGAPACQICITYICEEDSHLAGTLGLSAGPTSGNHLTTQDSQIVLPSTRTRPLE QKLISEEDLAANDILDYKDDDDKV
Purity	> 80% as determined by SDS-PAGE and Coomassie blue staining
Stability	Stable for 3 months from receipt of products under proper storage and handling conditions.
Storage	Store at -80 centigrade. Avoid repeated freeze-thaw cycles.

 Tel: 1-631-559-9269 1-516-512-3133

 Email: info@creative-biomart.com  Fax: 1-631-938-8127

 45-1 Ramsey Road, Shirley, NY 11967, USA

Concentration 50 µg/mL as determined by BCA

Storage Buffer 100 mM glycine, 25 mM Tris-HCl, pH 7.3.

GENE INFORMATION

Gene Name CARD17 caspase recruitment domain family member 17 [Homo sapiens (human)]

Official Symbol CARD17

Synonyms CARD17; caspase recruitment domain family, member 17; caspase recruitment domain-containing protein 17; INCA; Inhibitory CARD; caspase-1 inhibitor INCA; inhibitory caspase recruitment domain protein; inhibitory caspase recruitment domain (CARD) protein;

Gene ID 440068

mRNA Refseq NM_001007232

Protein Refseq NP_001007233

MIM 609490

UniProt ID Q5XLA6

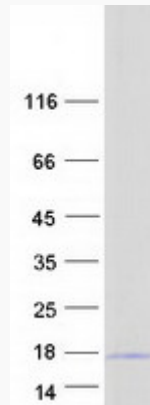
 Tel: 1-631-559-9269 1-516-512-3133

 Email: info@creative-biomart.com  Fax: 1-631-938-8127

 45-1 Ramsey Road, Shirley, NY 11967, USA



SDS-PAGE



Tel: 1-631-559-9269 1-516-512-3133

Email: info@creative-biomart.com Fax: 1-631-938-8127

45-1 Ramsey Road, Shirley, NY 11967, USA