

Recombinant Human CARD18 Protein, Myc/DDK-tagged, C13 and N15-labeled

Cat. No. CARD18-5069H **Lot. No.** (See product label)

SPECIFICATION

Product Overview	CARD18 MS Standard C13 and N15-labeled recombinant protein (NP_067546) with a C-terminal MYC/DDK tag, was expressed in HEK293 cells.
Species	Human
Source	HEK293
Description	CARD18 (Caspase Recruitment Domain Family Member 18) is a Protein Coding gene. Diseases associated with CARD18 include Asbestos-Related Lung Carcinoma. Among its related pathways are NOD-like receptor signaling pathway. Gene Ontology (GO) annotations related to this gene include cysteine-type endopeptidase inhibitor activity. An important paralog of this gene is CASP1.
Molecular Mass	10 kDa
AA Sequence	MADQLLRKKRRIFIHSVGAGTINALLDCLLEDEVISQEDMNKVRDENDTVMDKARVLI DLVTGKGPCKSCCKFIKHLCEEDPQLASKMGLHTRTRPLEQKLISEEDLAANDILDYKD DDDKV
Purity	> 80% as determined by SDS-PAGE and Coomassie blue staining
Stability	Stable for 3 months from receipt of products under proper storage and handling conditions.

 Tel: 1-631-559-9269 1-516-512-3133

 Email: info@creative-biomart.com  Fax: 1-631-938-8127

 45-1 Ramsey Road, Shirley, NY 11967, USA

Storage	Store at -80 centigrade. Avoid repeated freeze-thaw cycles.
Concentration	50 µg/mL as determined by BCA
Storage Buffer	100 mM glycine, 25 mM Tris-HCl, pH 7.3.

GENE INFORMATION

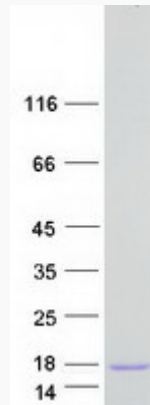
Gene Name	CARD18 caspase recruitment domain family member 18 [Homo sapiens (human)]
Official Symbol	CARD18
Synonyms	CARD18; caspase recruitment domain family, member 18; ICEBERG; UNQ5804; pseudo-ICE; caspase recruitment domain-containing protein 18; ICEBERG caspase-1 inhibitor; caspase-1 inhibitor Iceberg
Gene ID	59082
mRNA Refseq	NM_021571
Protein Refseq	NP_067546
MIM	605354
UniProt ID	P57730

 Tel: 1-631-559-9269 1-516-512-3133

 Email: info@creative-biomart.com  Fax: 1-631-938-8127

 45-1 Ramsey Road, Shirley, NY 11967, USA

SDS-PAGE



 Tel: 1-631-559-9269 1-516-512-3133

 Email: info@creative-biomart.com  Fax: 1-631-938-8127

 45-1 Ramsey Road, Shirley, NY 11967, USA